



Общая продуктовая линейка:

- Разъемы для карт памяти;
- Разъемы для SIM-карт;
- USB, HDMI разъемы;
- Разъемы RG45;
- Радиочастотные разъемы;
- FPC разъемы

Company Profile & Product Catalogue

CONNECTOR

M.2 Connector
SO DIMM Socket
Memory Card Socket
SIM Card Socket
Mini PCI Socket
Smart Card Socket
FPC Connector
HDMI Connector
E-SATA Connector
RJ45 Connector
Pogo Pin Connector
USB 2.0 / USB 3.0 / USB Combo Connector
SPDIF Jack
Board to Board Connector

CABLE

Audio/Video
Storage
Data Transfer
Networking
Board to Board
Industrial
High Frequency
Automation



Connector & Cable Solution Provider

➤	About ATTEND	01 - 04
➤	Memory Card Socket	05 - 06
➤	PCB Card Socket	07 - 08
➤	I/O Connector	09 - 13
➤	Pogo Pin, Board to Board, FPC	14
➤	Cable Assembly	15 - 18

About ATTEND

Why "ATTEND"?

I have often been asked if the word "ATTEND" has special meaning. Over the past two decades, I have been involved with many electronic components such as semiconductor, connector, and cable. These components have to be used by customers in their projects, which create our opportunities to sell.

Therefore, I profoundly realize that the most important thing of a successful enterprise in this industry is to proactively take part in the customers' product design. As a result, "attend your business", "attend your project", are the common faith of our team.

Furthermore, "attend" contains positive and active implications, so I choose "ATTEND" as our brand name. It is not only our principle, but also our promise to customers.

What is "Connect to Your Success"?

During the growth of ATTEND, we fully understand the importance of long-term relationships between customers and us. We cannot survive alone in the environment of electronics components industrial. Only when our customers achieve their goal can we have the opportunities to success.

"Connect to Your Success" is our business philosophy. Everything we do, we do it for your success.

Attend Technology Inc.
General Manager


Kenneth Fu

Brand Identity



- Innovation**
We are ATTEND, everything we do starts with our core value: "Innovation".
- Partnership**
ATTEND makes an important step to collaborate and build reliable partnerships, and to keep moving forward with our faith.
- Attentive**
As we enter a new decade of growth & prosperity, we will keep our principle of being "Attentive" and deliver our promise through a whole new "ATTEND's Way".

Our Specialties

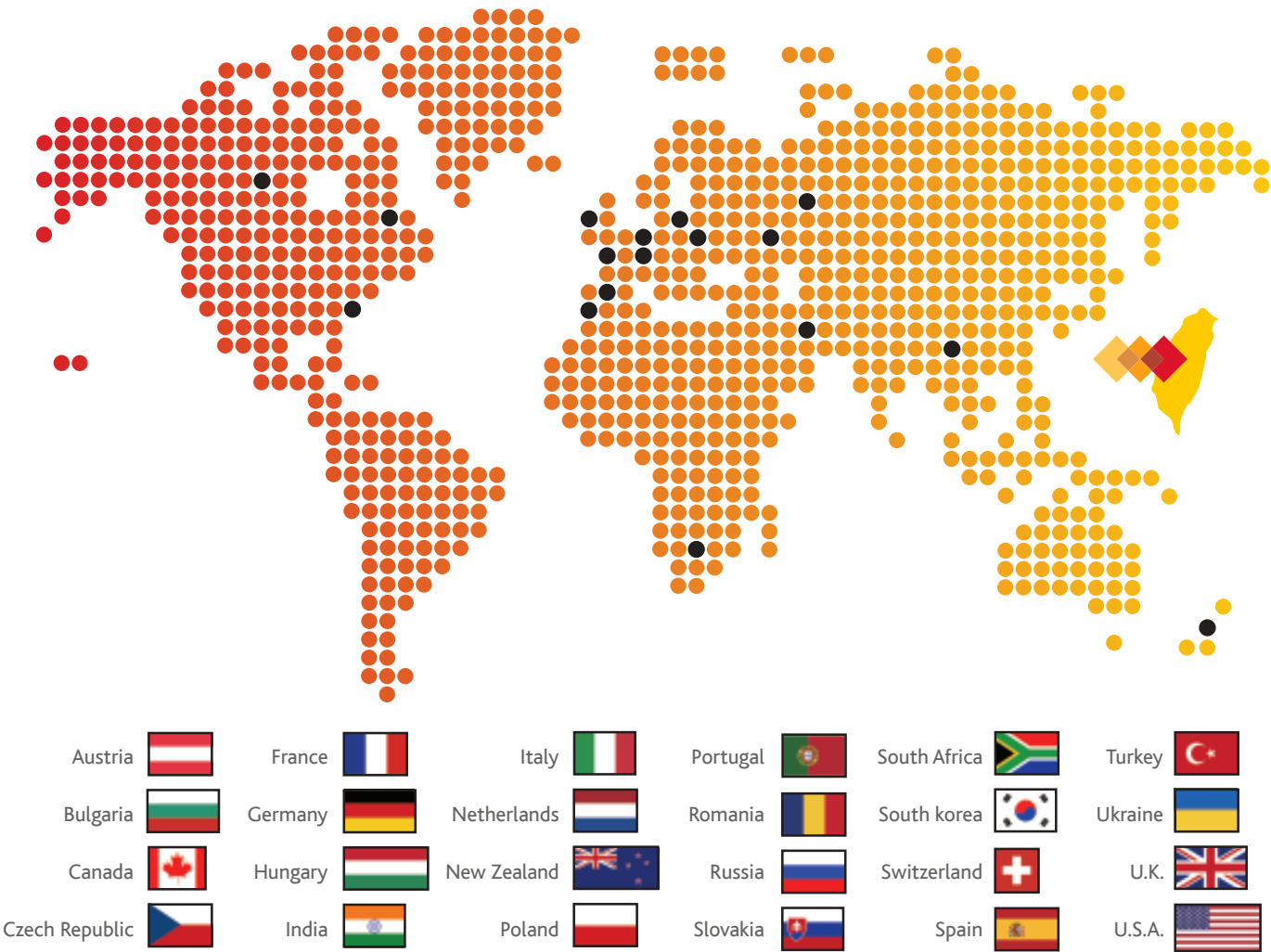


Connector
As a professional connectivity solutions provider, ATTEND is your one-stop total solution provider with our complete range of connector products for various applications. Our specialty is in networking and consumer applications, in which we are able to provide not only high quality products in a timely manner, but also new professional service models that makes us your most reliable partner.



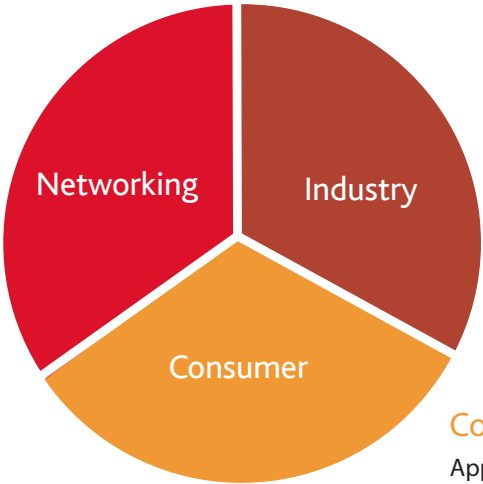
Cable Assembly
Our cable assembly solutions provide the advantage of customization service and design-in research & development which enables early involvement + higher success rate for your innovative projects. In addition, ATTEND is also equipped with advanced tooling technology & state of the art manufacturing facilities which enables the realization of innovative products and help our customers gain a competitive edge in the market.

Global Sales Channel and Target Market



Networking System

Application: ADSL Modem/Router, IP Router, IP STB, LTE Router, WiFi Router, VOIP, 3G 、 4G Modem, GSM/GPRS Module



Industry Application

Application: Security Camera, Vehicle Tracking, Smart Meter , Embedded System

Consumer Electronic Device

Application : Tablet PC, Internet Audio Equipment, Digital Photo Frame, Navigation Device

Connect to Your Success

ATTEND is your most trustworthy partner and your first choice for innovative connectivity solutions.

ATTEND is dedicated to provide the world-class connectivity solutions. Our value proposition is built upon on the core principle of “Connect to Your Success”. This is a common goal we share with our customers. This guiding principle drives us to develop integrated service innovations, which enables us to win in every promising market, and to connect every success in the networking business.



Memory Card Socket



CF Card Socket



CF



CF Type I Socket
101A-TAA0-R



CF Type I/II Socket
101B-TAA0-R



CF Ejector
101C-ESB0-R



CF Socket Slim Type
101D-TAAB-R01 38.74mm
101D-TACB-R01 38.74mm S/O 1.4mm



CF Female Connector
101H-SAAA-R, Straddle
101H-DCBA-R, SMT

CFAST



CFAST Socket
w/Lock Standoff 6.05mm
120B-605D00



CFAST Socket
w/o Lock Standoff 6.05mm
120A-605D00, Non-Push
120C-605D00, Push-Push

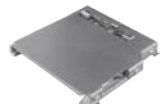


CFAST Socket
w/o Lock Standoff 8.35mm
120A-835D00, Non-Push
120C-835D00, Push-Push



CFAST Socket
w/Lock Standoff 8.35mm
120B-835D00

SD



SD Socket Non Push Type
104C-TAA0-R



SD Socket Push-Push Type
104D-TCA0-R06



SD Socket Push-Push Type
104D-TCC0-R06, s/o 1.8mm



SD Socket Push-Push Type
104D-RAA0-R01, Reverse



SD Socket Push-Push Type
104G-TAA0-R, w/Card Lock



SD Socket Push-Push Type
104H-TDA0-R01, w/Card Lock

Micro SD Card Socket



Micro SD



Micro SD Socket Hinge Type
112C-TBAR-R02



Micro SD+Sim Socket
112G-TA00-R



Micro SD Socket
Push-Push Type
112A-TAAR-R03



Micro SD Socket
Push-Push Type
112J-TDAR-R01



Micro SD Socket
Push-Pull Type
112I-TDAR-R

Multi Card Socket

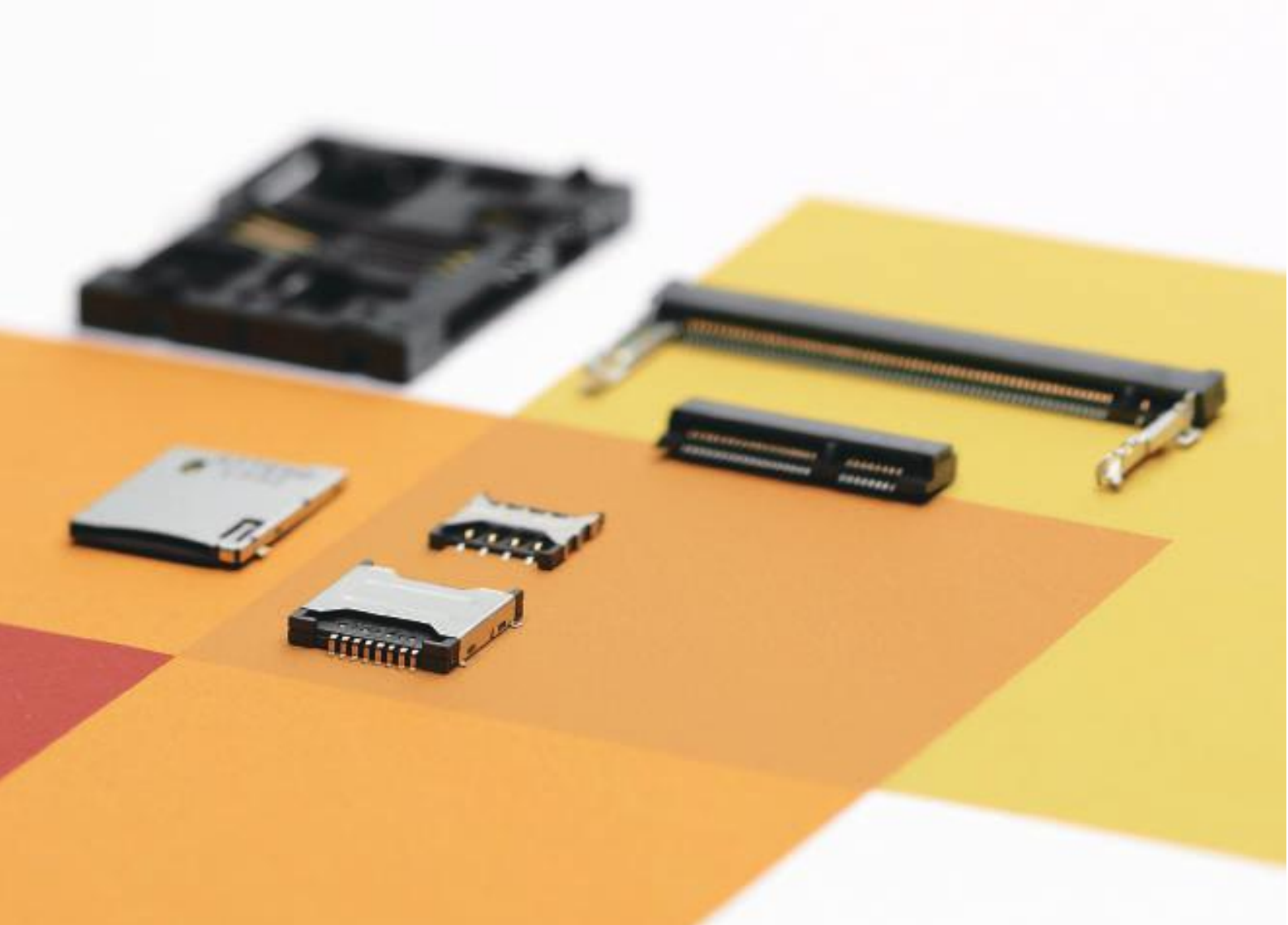


Multi Card



Multi memory Card Socket
107R-AD00-R, SD/MMC/MS
107R-BD00-R, SD/MMC/MS/xD
107R-CD00-R, SD/MMC/MS/xD/MMC4.0

PCB Card Socket



M.2



New

M.2 Connector



M.2 Connector
H=3.2mm max,A key
123A-32AA0-R01



M.2 Connector
H=3.2mm max,B key
123A-32BA0-R01



M.2 Connector
H=3.2mm max,E key
123A-32EA0-R01



M.2 Connector
H=3.2mm max,M key
123A-32MA0-R01



M.2 Connector
H=4.2mm max,B key
123A-42BA0-R01



M.2 Connector
H=4.2mm max,M key
123A-42MA0-R01

Mini PCI Express Socket



Mini PCI Express
Socket & Latch
Standoff 4.0mm
119A-40A00-R04



Mini PCI Express
Socket & Latch
Standoff 5.6mm
119A-56A00-R04



Mini PCI Express
Socket & Latch
Standoff 8.0mm
119A-80A00-R02



Mini PCI Express
Socket & Latch
Standoff 9.2mm
119A-92A00-R02

Mini PCI Socket



Mini PCI Socket
Metal Grounding Type
114B-40B00-R02, 4.0mm



Mini PCI Socket
Metal Grounding Type
114B-52B00-R02, 5.2mm



Mini PCI Socket
Metal Grounding Type
114B-56B00-R02, 5.6mm



Mini PCI Socket
Metal Grounding Type
114B-92B00-R02, 9.2mm

SIM Card Socket



SIM Socket Dual Type
115H-BA00



Micro SIM Socket
115I-AEAA



SIM Socket Push-Push Type
115A-ADA0-R02, 6 Pin
115A-BDA0-R01, 8 Pin



SIM Socket Hinge Type
115B-AAA0-R01, 6Pin
115B-BAA0-R01, 8Pin



SIM Socket Slim w/switch
115F-ACA0-R, 6+2 switch



SIM Socket Metal Hinge Type
115G-AAAA-R, 6 Pin



SIM Socket w/Card Holder
115C-AC00-R, 6Pin
115C-BC00-R, 8Pin



SIM Socket w/o Card Holder
115D-AXX00-RA1



SIM Socket Slim Type
w/o Card Holder
115E-AEA0-R01, 6Pin

Smart Card Socket



Smart Card Socket
SMT, Slim Type
116A-SB00-R



Smart Card Socket
DIP, Standard Type
116E-DCC0-R, Reverse



Smart Card Socket
Standard,Normal Open
116B-DB00-R02



Smart Card Socket
Standard,Normal Close
116B-DBC0-R02

SO DIMM Socket



DDR3



SO DIMM Socket
Standard Type
122A-40AX0, H=4.0mm
122A-52AX0, H=5.2mm
122A-80AX0, H=8.0mm
122A-92AX0, H=9.2mm



SO DIMM Socket
Vertical Type
122B-150AX0



SO DIMM Socket
Dual Port Type
122C-42A00

DDR2



Standard Type
Normal/Reverse
121A-52AX0, H=5.2mm
121A-92AX0, H=9.2mm



Vertical Type
Vertical Normal/Reverse
121B-150AX0

I/O Connector



USB 3.0
Connector



USB 3.0



USB 3.0 A Type Plug
Middle Board mount SMT Type
209A-SG03



USB 3.0 A Type Receptacle
Middle Board Mount DIP Type
209B-DG02



USB 3.0 A Type Receptacle
Dual Port DIP Type
209B-DG03



USB 3.0 B Type Receptacle
DIP Standard Type
209D-DG01

Micro USB 3.0



Micro USB 3.0 B Type
Receptacle
SMT Standard Type / Shell DIP
209E-BE01



Micro USB 3.0 B Type
Receptacle
SMT Standard Type / Shell SMT
209E-BE00



Micro USB 3.0 B Type
Receptacle
Vertical Type / Shell SMT
209F-BG00

USB 2.0
Connector



USB 2.0



USB 2.0 A Type Plug
205A-DANA-R, DIP Standard Type
205A-SBN0-R05, SMT Standard Type
205A-SBN0-R08, SMT, Middle Type



USB 2.0 A Type Receptacle
205B-DANO-R, Standard Type
205C-DANO-R02, Vertical Type
205F-DANO-R, Frank Type



USB 2.0 A Type Receptacle
205G-AANO-RA2, Dual Port
205G-EANO, Trip Port
205G-FANO, Dual Port Middle



USB 2.0 B Type Receptacle
205D-DANO-R, Right Angle DIP
205D-SANO-R, Right Angle SMT
205E-DANO-R, Vertical DIP
205E-SANO-R, Vertical SMT

Micro USB



Micro USB 2.0 Receptacle
SMT Standard
207A-ABAO-R, AB Type
207A-BBAO-R, B Type



Micro USB 2.0 Receptacle
SMT Middle
207E-BG00-R, B Type
207E-BA00-RA1, B Type



Micro USB 2.0 Receptacle
SMT Vertical
207F-BA00,B Type

Mini USB



Mini USB 2.0 A Type
202F-FGT0-R, Receptacle,
SMT Standard



Mini USB 2.0 AB Type
202C-FBTO-R03, Receptacle, SMT Standard
202C-FDNO-RA1, Receptacle, SMT Middle



Mini USB 2.0 B Type
202A-FBNR-R03, Receptacle, SMT Standard
202B-FBTO-R01, Receptacle, SMT Middle
202B-RBTO-R01, Reverse, SMT Middle
202D-FBNO-R, Vertical Receptacle, DIP
202G-Vertical, 202H-R/A DIP



Mini USB 2.0 B Type Plug
202B-MDNO-R, Plug, SMT, Middle
202E-MGNO-R01, Plug, DIP, Middle
207C-AEAA-RA3
8Pin, Shell DIP

Multi Port



USB 2.0 + E-SATA
205G-BEN0



USB 2.0 + RJ45
205G-CANO, USB x2



USB 2.0 + HDMI
205G-DEN0



USB 3.0 + RJ45
209G-CANO,USB3.0x2

New

HDMI Connector



HDMI D Type Middle Board Mount, Shell SMT
206H-SABN



HDMI D Type Receptacle SMT Standard Type / Shell DIP
206H-SDAN-R01



HDMI C Type Receptacle SMT Standard Type / Shell DIP
206G-SGAN-R01



HDMI A Type Receptacle SMT Standard Type / Shell DIP
206A-SEAN-R03



HDMI A Type Receptacle SMT Standard Type / Shell SMT
206A-SABN



HDMI A Type Receptacle w/ Flange SMT Standard Type / Shell DIP
206B-SEAN-R01



HDMI A Type Receptacle w/ Flange SMT Standard Type / Shell SMT
206B-SABN



HDMI Straight Type Straight w/Flange SMD Type/ DIP Type
206F-SEAN-RA1

E-SATA Connector



E-SATA Plug SMT Standard Type / Shell DIP
215C-SEB0
215C-REB0, Reverse



E-SATA Plug DIP Standard Type / Shell DIP
215B-SEB0
215B-REB0, Reverse



E-SATA Plug Vertical DIP Type / Shell DIP
215A-SEB0



E-SATA Plug Flank DIP Type / Shell DIP
215D-SEB0

IEEE 1394



IEEE 1394 SMT Type
203B-FAN0

Display Port



Display Port SMT Type
208A-SEA0-R02

SPDIF



SPDIF+RCA
302B-TBA0-RA1



SPDIF+Mini Din
302D-TBA0-RA1

RJ45 Jack



RJ45



RJ45 Jack SMT Type
210A-11C0B-RA4



RJ45 Shielded Type, 1X w/o LED
210A-11C0A-R



RJ45 Jack Shielded Type, w/o LED
210A-1XC0B-R w/o EMI



RJ45 Jack Shielded Type, w/o LED Vertical
210A-11C0A-RA10



RJ45 Shielded Type, 2X w/o LED
210A-2XC0A-R, w/ EMI
210A-2XC0B-R, w/o EMI



RJ45 Shielded Type, Middle Mount w/o LED
210A-11A0D-R14, Upper Latch
210A-11A0D-R15, Bottom Latch



RJ45 Shielded Type, w/ LED
211A-11CAA-R01,w/EMI
211A-11CBA-R01,w/EMI
211A-11ABA-RA5,w/o EMI



RJ45 Shielded Type, 1X w/ LED
211A-1XCBA-R



RJ45 Shielded Type, 2X w/ LED
211A-2XCAA-R



RJ45 Shielded Type, Middle Mount w/ LED
211A-11ADA-RA3,Sink 3.4
211A-11ADA-RA4,Sink 4.9



RJ Jack Plastic Type, w/o LED
210B-6XCX0-R
210B-44CB0-R



RJ45 Jack Plastic Type
210B-88CX0-R
211B-11C0X-R



RJ45 Jack Plastic Type, 1X w/LED
211B-1XC0A-R



RJ45 Jack Plastic Type, 2X w/o LED
211B-2XC00-R



RJ45 Jack Magnetic Type, w/o LED
212A-11CA0-R



RJ45 Jack Magnetic Type, 1X w/o LED
212A-12CA0-RA10
212A-14CA0-RA11
212A-14CA0-RA12



RJ45 Jack Magnetic Type, w / LED
213A-11CAA-R



RJ45 Jack Magnetic Type, 1X w/LED
213A-14CAA-RA14



RJ45 Jack Magnetic Type, 2X w/LED
213A-22CAC-RA15

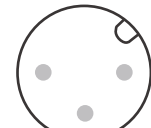


RJ45 Jack 10/100Type, PoE with LED
214A-11CAA

M12



Contact Configuration



A code



B code



C code



D code



P code

Receptacle

Rear Fastened



Solder Type

Male
216A-08MAR

Female
216A-05FAR

Front Fastened



Solder Type

Male
216A-05MAF

Female
216A-05FAF

Front Fastened



PCB

Male
216A-05MSF

Female
216A-05FSF

Plug for Cable



Overmolded with Cable ,Male
216A-05MOO



Overmolded with Cable ,Female
216A-05FOO



Installed with Cable, Male
216A-08MF0



Installed with Cable, Female
216A-08FF0

Pogo Pin



Pogo Pin, Single Contact
Fly Type
Plug in Type
Bending Type
Right Angle Type
Double Ends



Pogo Pin, Multi Contacts
Fly Type
Plug in Type
Bending Type
Right Angle Type
Double Ends

Board to Board



Board to Board Plug
320A-XXPAA, PH 0.5mm, H=3mm,
8,16,30,50,80 pins
320A-100PAA, PH 0.5mm H=4mm



Board to Board Receptacle
320A-XXRAA, PH 0.5mm, H=3mm,
8,16,30,50,80 pins
320A-100RAA, PH 0.5mm H=4mm

FPC

ZIF Type



FPC, Horizontal
311A-XXUAA-R, Upper Contact
311A-XXLAA-R, Lower Contact
PH 0.5mm, H=2.0mm



FPC, Horizontal
313A-XXUAA-R, Upper Contact
313A-XXLAA-R, Lower Contact
PH 0.5mm, H=1.2mm

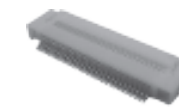


FPC, Vertical
312A-XXNAA-R
312A-XXRAA-R, Reverse
PH 0.5mm, H=2.0mm



FPC, Vertical
312B-XXNAA
312B-XXRAA, Reverse
PH 1.0mm, H=2.0mm

Flip Type



FPC, Horizontal
314A-XXBAA-R, PH 0.5mm, H=2.0mm
314C-XXBAA-R, PH 0.5mm, H=2.5mm
315A-XXBAA-R01, PH 0.5mm, H=0.9mm



FPC, Middle Board
316B-XXBAA-R
PH 0.5mm, H=1.5 mm

Cable Assembly

Customization
Design-in
Advance tooling technology



World Class Cable Assembly Solutions

Our Core Competence



Customization

Communication

Our well-trained R&D personnel and professional engineers can not only clearly understand your requirement, but also provide you the most appropriate solution.

One-stop package service

During the period from prototype to mass production, ATTEND can provide the variety of wire, molding, PCB components.



Manufacture

Molding

- Component Material: PVC, TPE, PU

Cable

- Insulation: PP, PE, PVC, SR-PVC, Hytrel, TPFE
- Jack Material: PVC, TPE, PU
- Format: Coiled Cable, Flat Cable, Custom Material

Specialty

- Waterproof, Anti oil, Anti UV



Testing

We can provide various testing reports of prototype on demand. With the following tests, we have competence to improve the prototype's format, function, and lower its costs.



Logistic

ATTEND's superior international logistics management can rise the efficiency of manufacture, stock and shipment. Therefore, you can enjoy a faster and more stable delivery process.



Problem-solving & Customer Service

Our clients will get response in 24 hour, and realize the crux of the problem very soon. Moreover, we will provide 8D report to help you solve the problem thoroughly.

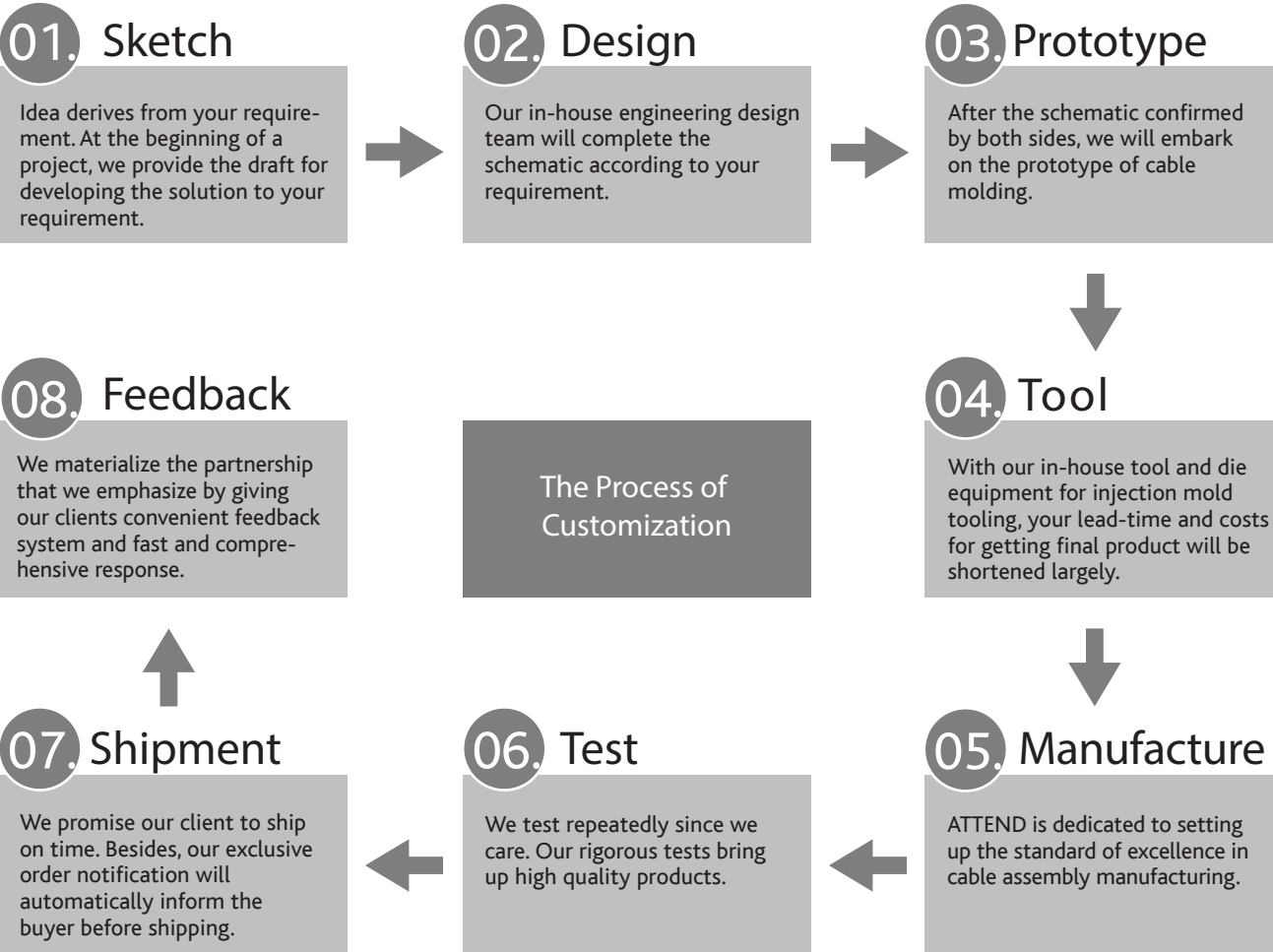


Quality Declaration

We have confidence that our clients have a great purchasing experience with us. You are our precious partner. Your success is the catalyst to ours.

How We Customize Cable Assemblies

We can satisfy all your demand for cable assembly, including design, manufacture, and even after-sale service. We welcome you to talk about your any idea related to cable.



Audio/Video



- RCA
- Mini Din
- Audio
- Video
- VGA To S-Video
- VGA To RGB

Storage



- SATA
- USB 2.0/3.0
- HDMI
- Micro USB
- Mini USB
- Flat CABLE
- FFC CABLE

Data Transfer



- D-SUB To RJ45
- DC Jack Plug
- USB To Mini B
- USB M/F To RJ45
- USB To Micro B
- D-SUB To D-SUB
- USB M/F To D-SUB

Networking



- CAT5E
- CAT6

Board to Board



- Board To Wire
- Board To Board
- Wire to Wire
- FFC
- FPC

Industrial



- M8
- M12
- M16
- DIN Plug

High Frequency



- RF Cable Assemblies

Automation



- Robotics Cable
- Machine Vision Systems Cable
- Industrial Automated Machinery Cable
- Large Storage Systems Cable
- HPC (High Performance Computer) Systems
- Cable



Поставка образцов и промышленных партий:
www.RCT.ru

