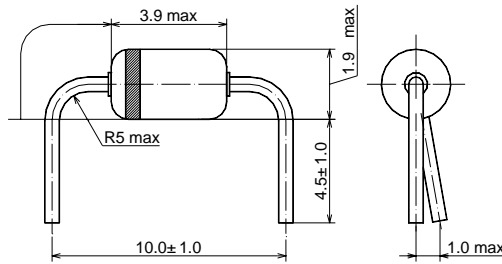


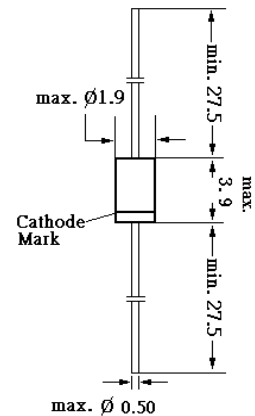
ST60P, ST60S

SILICON SCHOTTKY BARRIER DIODE

Characteristics equivalent to or better than 1N60P and 1N60S ideal for used in detection or for switching on the radio, TV, etc.



Glass case DO-35-1
Dimensions in mm



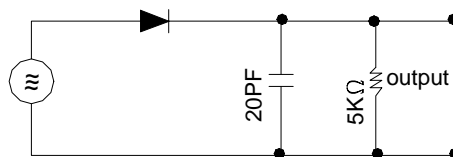
Glass case JEDEC DO-35
Dimensions in mm

Absolute Maximum Ratings ($T_a = 25^\circ\text{C}$)

	Symbol	Value	Unit
Peak Reverse Voltage	V_{RM}	45	V
Reverse Voltage dc	V_R	20	V
Peak Forward Current	I_{FM}	150	mA
Average Rectified Output Current	I_O	50	mA
Surge Forward Current	I_{surge}	500	mA
Junction Temperature	T_j	175	$^\circ\text{C}$
Storage Temperature Range	T_S	-55 to +175	$^\circ\text{C}$

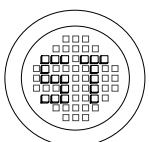
Characteristics ($T_a = 25^\circ\text{C}$)

	Symbol	Min.	Max.	Unit
Forward Current at $V_F=1\text{V}$	I_F	4	-	mA
Reverse Current at $V_R=10\text{V}$	I_R	-	50 100	μA
Junction Capacitance at $f = 1\text{MHz}$, $V = -1\text{V}$	C	-	1	pF
Rectification efficiency at $V_i = 2\text{Vrms}$, $R = 5\text{K}\Omega$, $C = 20\text{pF}$, $f = 40\text{MHz}$	η	55	-	%



Input 2Vrms

Rectification Efficiency Measurement Circuit



®

РАДИОТЕХ

Тел.: (495) 795-0805
Факс: (495) 234-1603
Эл. почта: info@rct.ru
Веб: www.rct.ru