

SDP410D

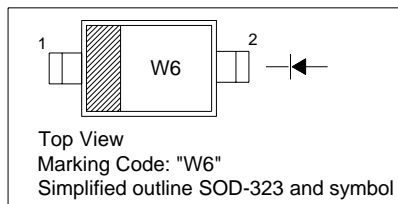
BAND SWITCHING DIODE

FEATURES

- VHF tuner band switch applications
- Small total capacitance: $C_T = 1.2\text{pF}(\text{max.})$
- Low series resistance: $r_s = 0.9\Omega(\text{max.})$

PINNING

PIN	DESCRIPTION
1	Cathode
2	Anode

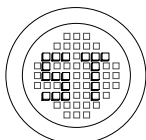


Absolute Maximum Ratings ($T_a = 25\text{ }^\circ\text{C}$)

Characteristics	Symbol	Limits	Unit
Continuous reverse voltage	V_R	30	V
Forward current	I_F	100	mA
Junction temperature	T_J	150	?
Storage temperature	T_{stg}	-55 ... +150	?

Electrical Characteristics ($T_a = 25\text{ }^\circ\text{C}$)

Characteristics	Symbol	Min.	Typ.	Max.	Unit	Test Conditions
Forward voltage	V_F	-	-	0.85	V	$I_F = 2\text{mA}$
Reverse current	I_R	-	-	0.1	μA	$V_R = 15\text{V}$
Reverse voltage	V_R	30	-	-	V	$I_R = 1\mu\text{A}$
Total capacitance	C_T	-	0.7	1.2	pF	$V_R = 6\text{V}, f = 1\text{MHz}$
Series resistance	r_s	-	0.5	0.9	Ω	$I_F = 2\text{mA}, f = 100\text{MHz}$

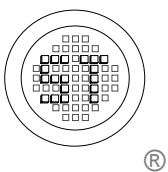
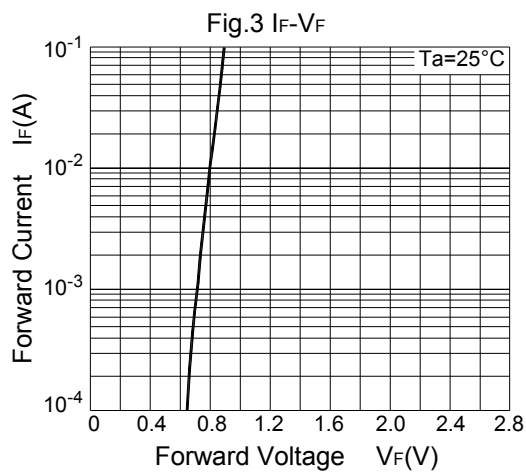
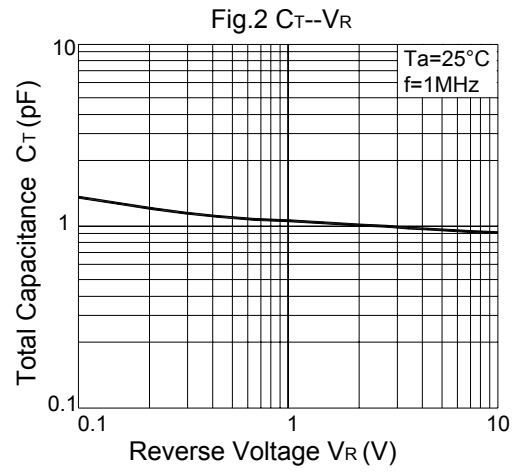
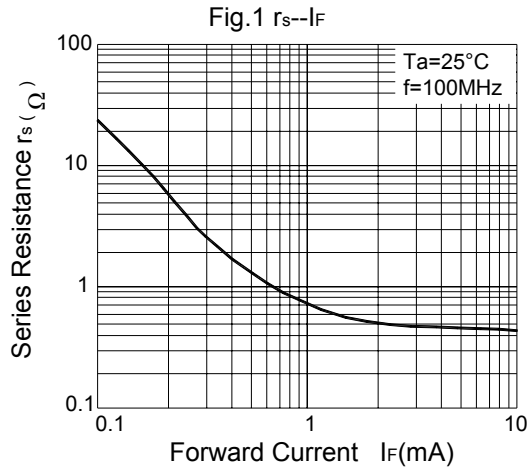


®

РАДИОТЕХ

Тел.: (495) 795-0805
Факс: (495) 234-1603
Эл. почта: info@rct.ru
Веб: www.rct.ru

Electrical Characteristic Curves



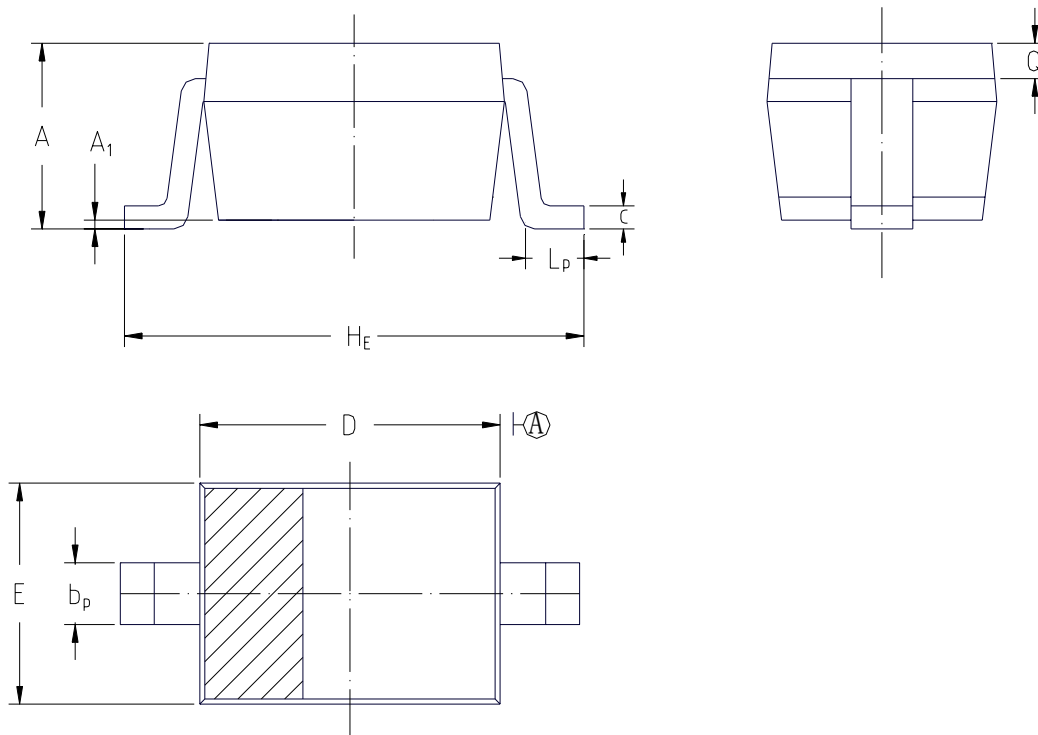
SEMTECH ELECTRONICS LTD.
 (Subsidiary of Semtech International Holdings Limited, a company
 listed on the Hong Kong Stock Exchange, Stock Code: 724)



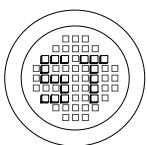
SDP410D

PACKAGE OUTLINE

SOD-323



UNIT	A	A ₁	b _p	c	D	E	H _E	L _p	Q
mm	1.10 0.80	0.1 0	0.40 0.25	0.15 0.00	1.80 1.60	1.35 1.15	2.80 2.30	0.50 0.10	0.15 REF.



®

SEMTECH ELECTRONICS LTD.

(Subsidiary of Semtech International Holdings Limited, a company listed on the Hong Kong Stock Exchange, Stock Code: 724)



ISO/TS 16949 : 2002
Certificate No. 05103



ISO 14001:2004
Certificate No. 7116



ISO 9001:2000
Certificate No. 0506098

Dated : 31/08/2004