

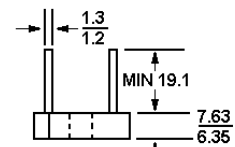
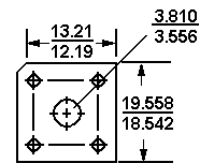
BR10 THRU BR1010

10A SINGLE-PHASE SILICON BRIDGE RECTIFIERS

Features

- Surge overload rating-200 amperes peak
- Low forward voltage drop
- Small size; simple installation
- Silver Plated Copper leads
- Mounting Position: Any
- Ceramic case

VOLTAGE RANGE
50 to 1000 Volts PRV
CURRENT
10 Amperes



Polarity shown on side of case;
positive lead by beveled corner.

Dimensions in mm

Absolute Maximum Ratings and Characteristics

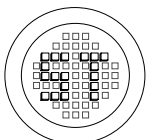
Rating at 25°C ambient temperature unless otherwise specified. For capacitive load, derate current by 20%.

	BR1005	BR101	BR102	BR104	BR106	BR108	BR1010	Units	
Maximum Recurrent Peak Reverse Voltage	50	100	200	400	600	800	1000	V	
Maximum RMS Voltage	35	70	140	280	420	560	700	V	
Maximum Average Forward Rectified Output Current at	10							A	
$T_C = 50^\circ\text{C}$								A	
$T_C = 100^\circ\text{C}^*$								A	
$T_A = 50^\circ\text{C}^{**}$	6							A	
Peak Forward Surge Current, 8.3ms single half sine-wave superimposed on rated load	200							A	
Maximum Forward Voltage Drop per element at 5A Peak	1.1							V	
Maximum Reverse Current at Rated DC Blocking Voltage per element	10							$T_A = 25^\circ\text{C}$	uA
								$T_A = 100^\circ\text{C}$	mA
Operating Temperature Range T_C	-55 to +125							$^\circ\text{C}$	
Storage Temperature Range T_A	-55 to +125							$^\circ\text{C}$	

Notes:

* Unit mounted on metal chassis

** Unit mounted on P.C. board

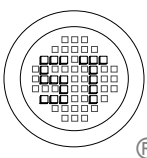
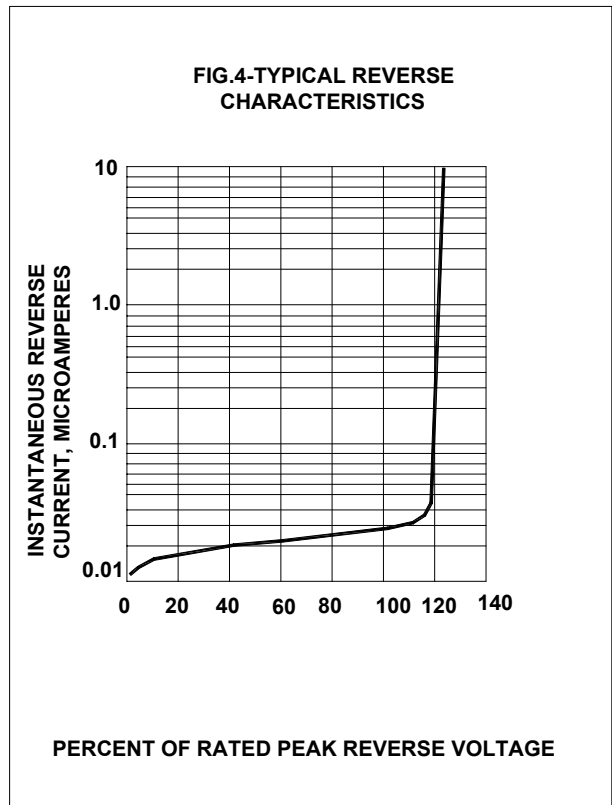
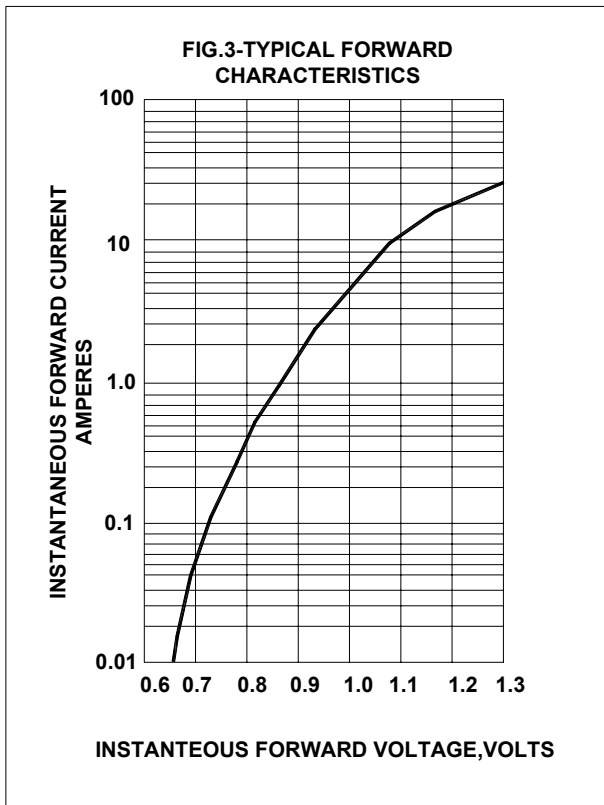
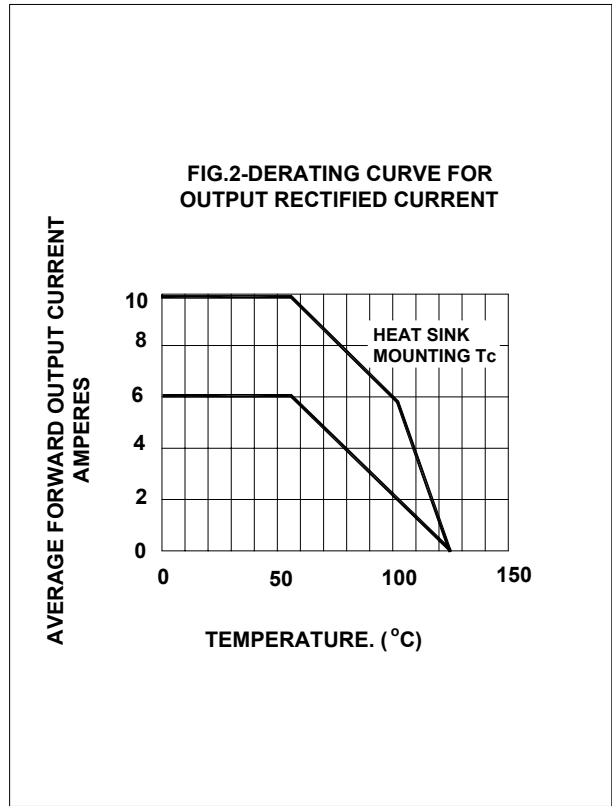
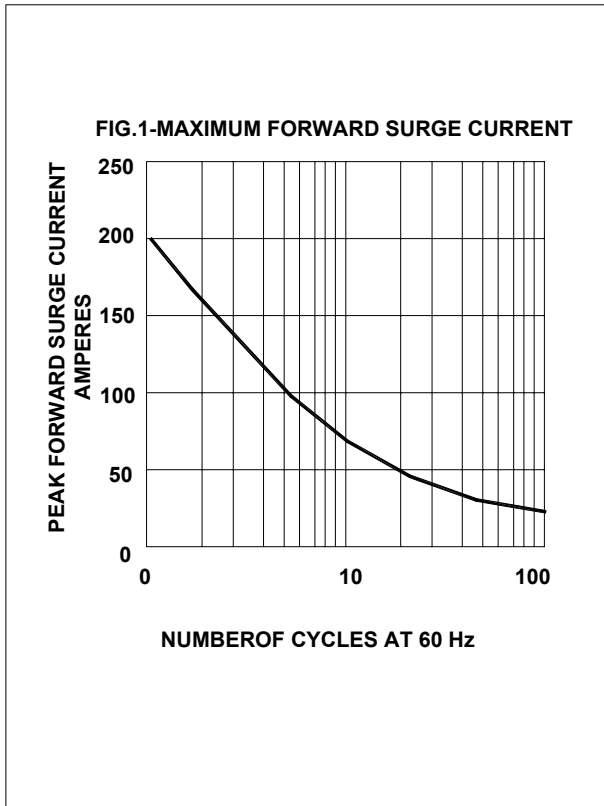


®

РАДИОТЕХ-ТРЕЙД

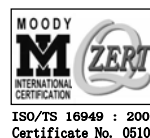
Тел.: (495) 795-0805
Факс: (495) 234-1603
Эл. почта: info@rct.ru
Веб: www.rct.ru

RATINGS AND CHARACTERISTIC CURVES (BR10 SERIES)



SEMTECH ELECTRONICS LTD.

(Subsidiary of Semtech International Holdings Limited, a company listed on the Hong Kong Stock Exchange, Stock Code: 724)



ISO/TS 16949 : 2002
Certificate No. 05103



ISO 14001
Certificate No. 7116



ISO 9001 : 2000
Certificate No. 6529-1999-02-02-02

Dated : 11/11/2002