

BB148WS

VHF VARIABLE CAPACITANCE DIODE

FEATURES

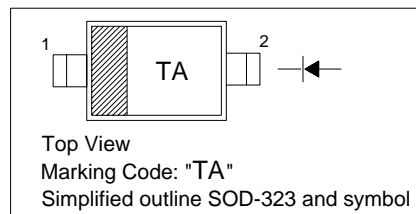
- Excellent linearity
- Excellent matching to 1% DMA
- Very small plastic SMD package
- C28: 2.6 pF; ratio:15
- Low series resistance

APPLICATIONS

- Electronic tuning in VHF television tuners.
- VCO

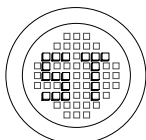
PINNING

PIN	DESCRIPTION
1	Cathode
2	Anode



Absolute Maximum Ratings ($T_a = 25\text{ }^{\circ}\text{C}$)

Parameter	Symbol	Limits	Unit
Continuous reverse voltage	V_R	30	V
Continuous forward current	I_F	20	mA
Operating junction temperature	T_j	-55...+125	$^{\circ}\text{C}$
Storage temperature	T_{stg}	-55 ... +150	$^{\circ}\text{C}$



®

РАДИОТЕХ

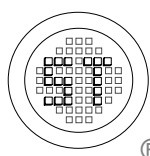
Тел.: (495) 795-0805
Факс: (495) 234-1603
Эл. почта: info@rct.ru
Веб: www.rct.ru

BB148WS

Electrical Characteristics (Ta = 25 °C)

Parameter	Symbol	Min	Typ	Max	Unit	Conditions
Reverse current	I_R	- -	- -	10 200	nA	$V_R = 30V$ $V_R = 30V, T_j = 85^\circ C$ (see Fig.3)
Diode capacitance	C_d	36.8 2.4	- -	41.8 2.75	pF	$V_R = 1V, f = 1MHz$ $V_R = 28V, f = 1MHz$ (see Fig2 and 4)
Capacitance ratio	$C_{d(1V)} / C_{d(28V)}$	14.5	-	-	-	$f = 1MHz$
Capacitance matching	$\Delta C_d / C_d$	-	-	1	%	$V_R = 0.5$ to $28V$; in a sequence of 4 diodes (gliding)
		-	-	2	%	$V_R = 0.5$ to $28V$; in a sequence of 20 diodes (gliding)
Diode series resistance ¹⁾	r_s	-	-	0.9	Ω	$f = 100MHz$

¹⁾ V_R is the value at which $C_d = 12$ pF.



SEMTECH ELECTRONICS LTD.

(Subsidiary of Semtech International Holdings Limited, a company listed on the Hong Kong Stock Exchange, Stock Code: 724)



ISO/TS 16949 : 2002
Certificate No. 05103

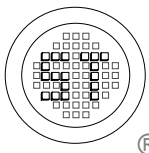
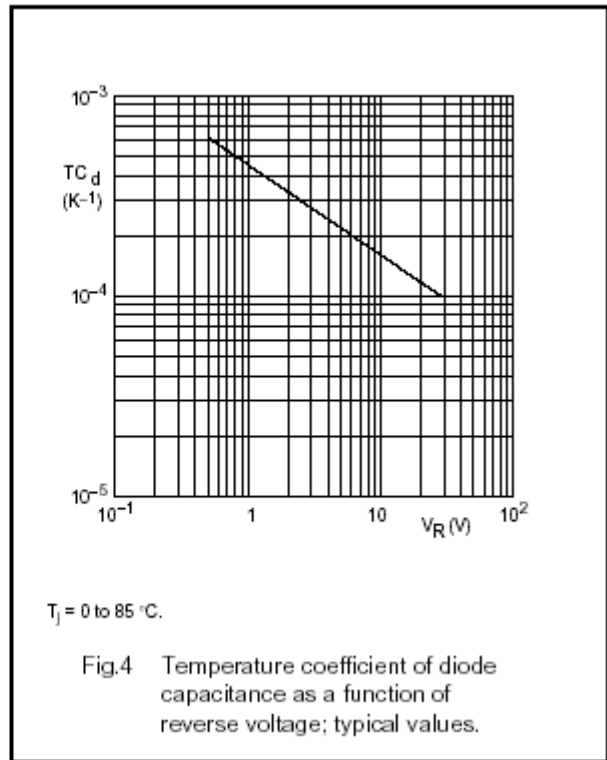
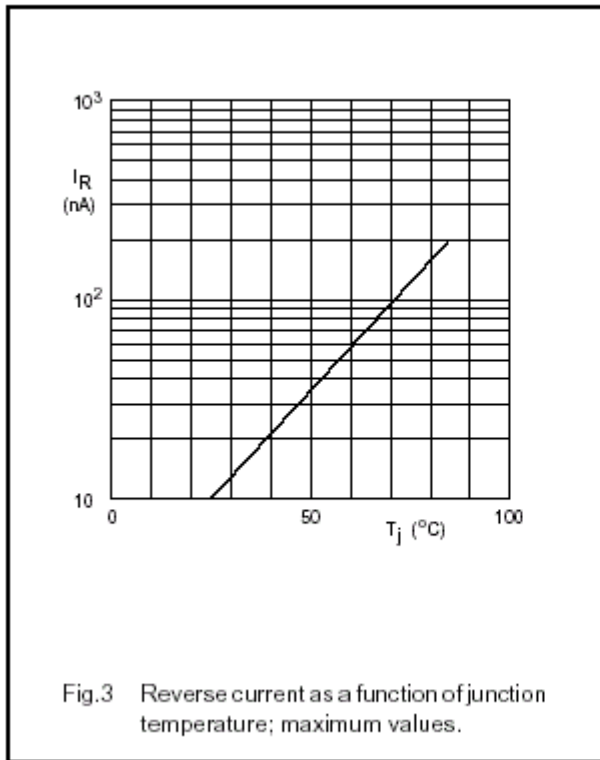
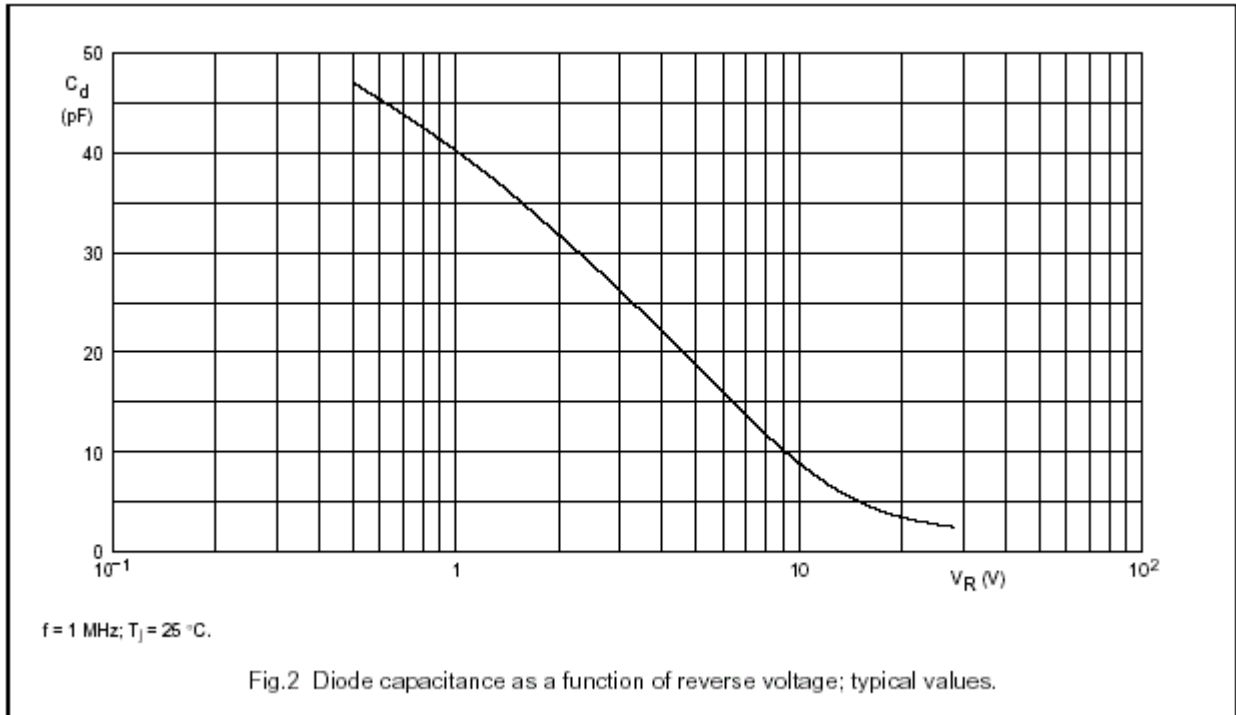


ISO 14001
Certificate No. 7116



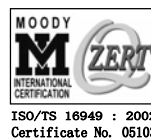
ISO 9001 : 2000
Certificate No. 250-155-04-002-04

Dated : 30/08/2004



SEMTECH ELECTRONICS LTD.

(Subsidiary of Semtech International Holdings Limited, a company listed on the Hong Kong Stock Exchange, Stock Code: 724)



ISO/TS 16949 : 2002
Certificate No. 05103



ISO 14001
Certificate No. 7116

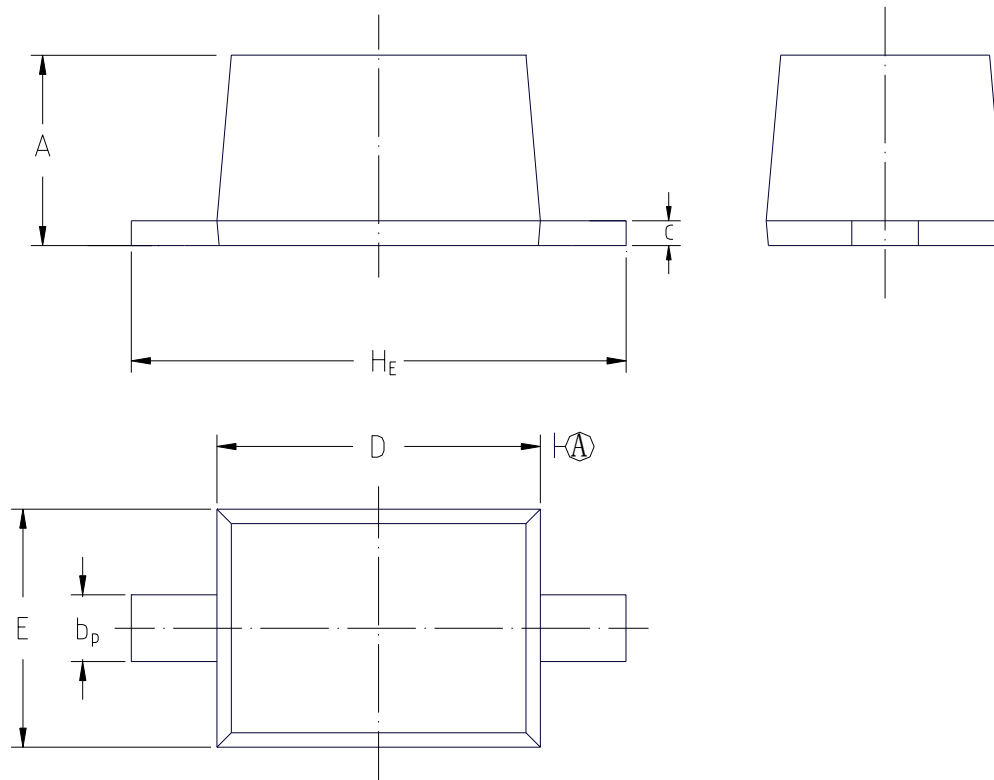


ISO 9001 : 2000
Certificate No. 550-159-01-002-004

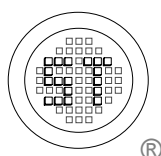
BB148WS

PACKAGE OUTLINE

SOD-323



UNIT	A	b _p	c	D	E	H _E
mm	1.10 0.80	0.40 0.25	0.15 0.00	1.80 1.60	1.35 1.15	2.80 2.30



SEMTECH ELECTRONICS LTD.

(Subsidiary of Semtech International Holdings Limited, a company listed on the Hong Kong Stock Exchange, Stock Code: 724)



ISO/TS 16949 : 2002
Certificate No. 05103



ISO 14001
Certificate No. 7116



ISO 9001 : 2000
Certificate No. 550-159-04-002-04

Dated : 30/08/2004