

1SV200AWT

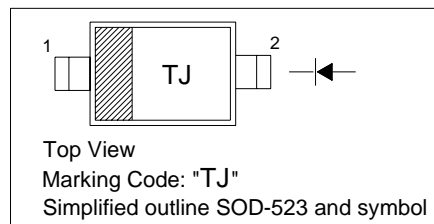
VHF TUNER VARIABLE CAPACITANCE DIODE

FEATURES

- Low series resistance and good C-V linearity.
- High capacitance ratio (n=10min) and suitable for wide band tuner.

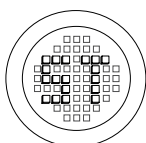
PINNING

PIN	DESCRIPTION
1	Cathode
2	Anode



Absolute Maximum Ratings ($T_a = 25\text{ }^{\circ}\text{C}$)

Parameter	Symbol	Limits	Unit
Reverse voltage	V_R	32	V
Operating junction temperature range	T_j	125	?
Storage temperature	T_{stg}	-55 ... +125	?



®

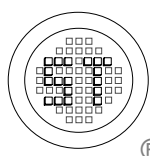
РАДИОТЕХ

Тел.: (495) 795-0805
Факс: (495) 234-1603
Эл. почта: info@rct.ru
Веб: www.rct.ru

1SV200AWT

Electrical Characteristics (Ta = 25 °C)

Parameter	Symbol	Min	Typ	Max	Unit	Conditions
Reverse current	I_R	- -	- -	10 100	nA	$V_R = 30V$ $V_R = 30V, T_j = 60^\circ C$
Diode capacitance	C_d	27.7 2.67	- -	31.8 3.03	pF	$V_R = 2V, f = 1MHz$ $V_R = 25V, f = 1MHz$
Capacitance ratio	$C_{d(2v)} / C_{d(25v)}$	10	-	-	-	-
Matching error	$\Delta C_d / C_d$	-	-	2	%	$V_R = 2V$ to $25V, f = 1MHz$
Series resistance	r_s	-	-	0.7	Ω	$f = 470MHz, V_R = 5V$



SEMTECH ELECTRONICS LTD.

(Subsidiary of Semtech International Holdings Limited, a company listed on the Hong Kong Stock Exchange, Stock Code: 724)



ISO/TS 16949 : 2002
Certificate No. 05103



ISO 14001
Certificate No. 7116



ISO 9001 : 2000
Certificate No. 550-1559-04-002-04

Dated : 05/11/2004

1SV200AWT

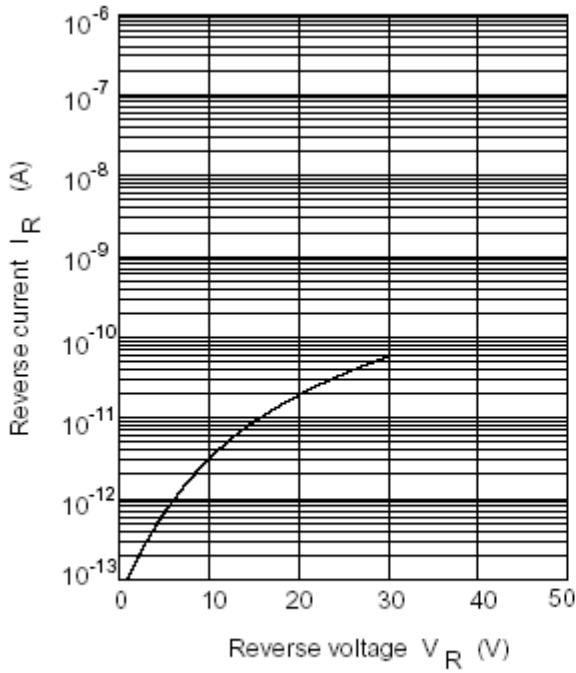


Fig.1 Reverse current Vs. Reverse voltage

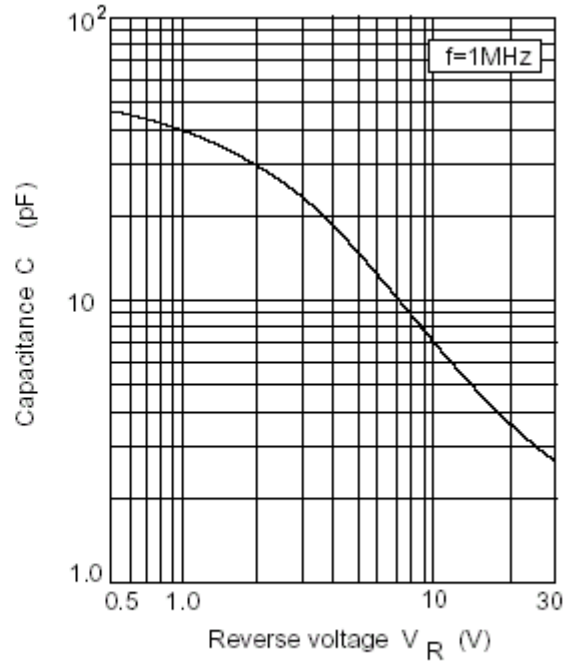


Fig.2 Capacitance Vs. Reverse voltage

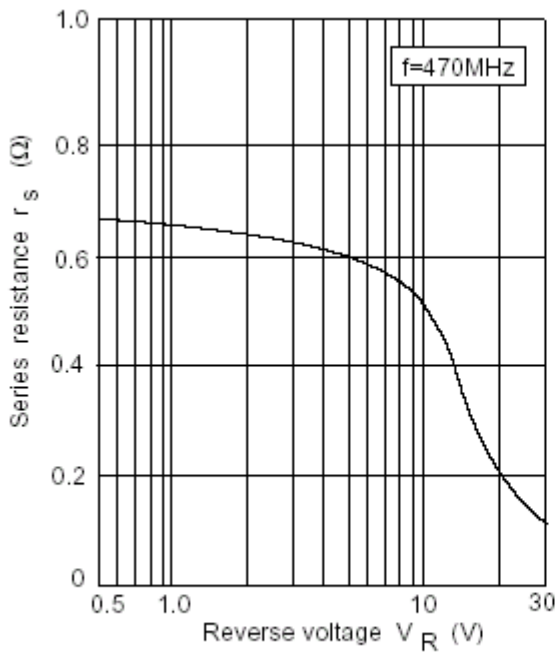


Fig.3 Series resistance Vs. Reverse voltage

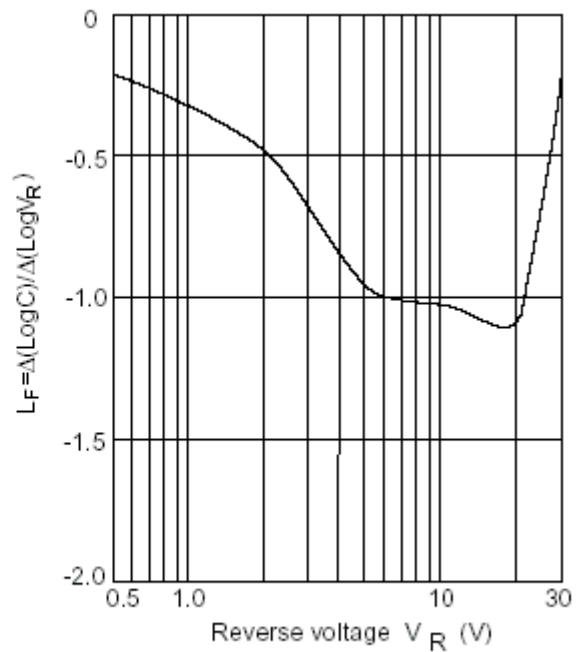
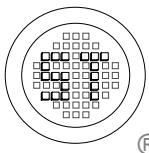


Fig.4 Linearity factor Vs. Reverse voltage



SEMTECH ELECTRONICS LTD.

(Subsidiary of Semtech International Holdings Limited, a company listed on the Hong Kong Stock Exchange, Stock Code: 724)



ISO/TS 16949 : 2002
Certificate No. 05103



ISO 14001
Certificate No. 7116



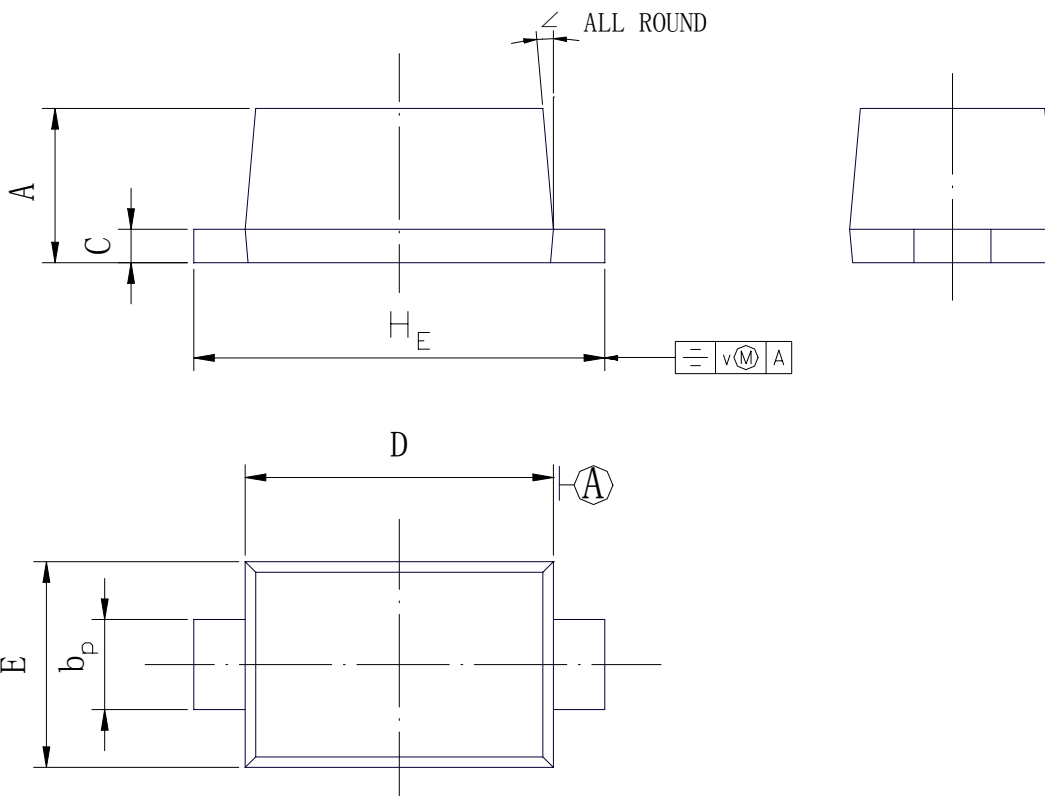
ISO 9001 : 2000
Certificate No. 550-159-04-00-04

Dated : 05/11/2004

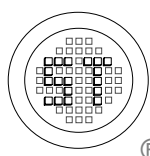
1SV200AWT

PACKAGE OUTLINE

SOD-523



UNIT	A	b _P	C	D	E	H _E	v	∠
mm	0.70 0.60	0.4 0.3	0.135 0.127	1.25 1.15	0.85 0.75	1.65 1.55	0.1	5°



SEMTECH ELECTRONICS LTD.

(Subsidiary of Semtech International Holdings Limited, a company listed on the Hong Kong Stock Exchange, Stock Code: 724)



ISO/TS 16949 : 2002
Certificate No. 05103



ISO 14001
Certificate No. 7116



ISO 9001 : 2000
Certificate No. 050159-04-002-04

Dated : 05/11/2004