

1SS388

SILICON EPITAXIAL SCHOTTKY BARRIER DIODE

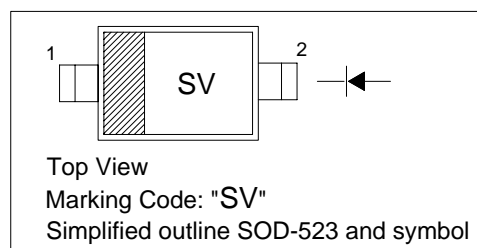
High Speed Switching Application

Features

- Low forward voltage:
 $V_{F(3)} = 0.54V$ (typ.)
- Low reverse voltage:
 $I_R = 5\mu A$ (typ.)

PINNING

| PIN | DESCRIPTION |
|-----|-------------|
| 1 | Cathode |
| 2 | Anode |

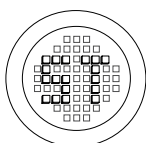


Absolute Maximum Ratings ($T_j = 25^\circ C$)

| Parameter | Symbol | Value | Unit |
|--------------------------------|-----------|-------------|------|
| Maximum (peak) Reverse Voltage | V_{RM} | 45 | V |
| Reverse Voltage | V_R | 40 | V |
| Maximum (peak) Forward Current | I_{FM} | 300 | mA |
| Average Forward Current | I_O | 100 | mA |
| Surge Current (10ms) | I_{FSM} | 1 | A |
| Power Dissipation | P_{tot} | 150 | mW |
| Junction Temperature | T_J | 125 | °C |
| Storage Temperature Range | T_s | -55 to +125 | °C |
| Operating Temperature Range | T_{opr} | -40 to +100 | °C |

Characteristics at $T_j = 25^\circ C$

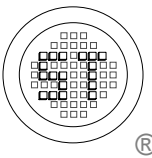
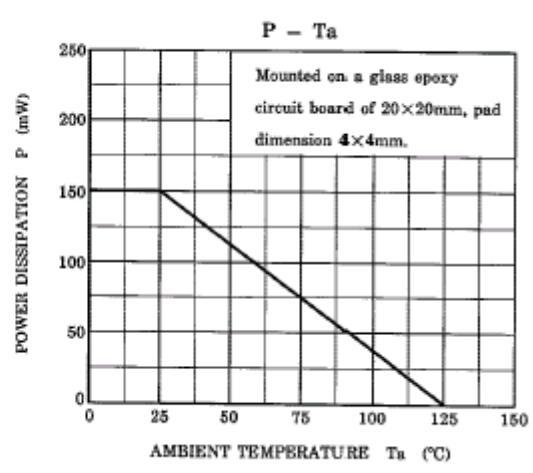
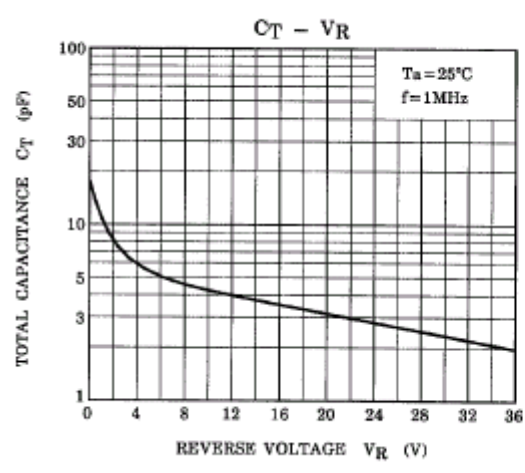
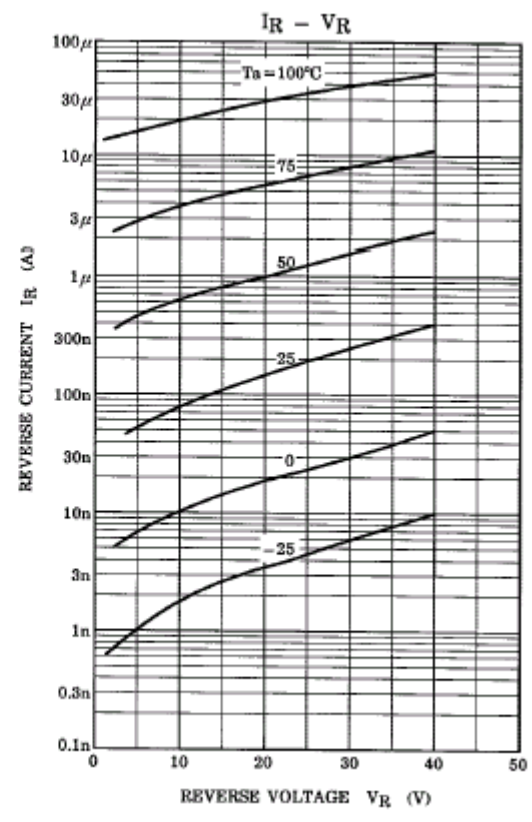
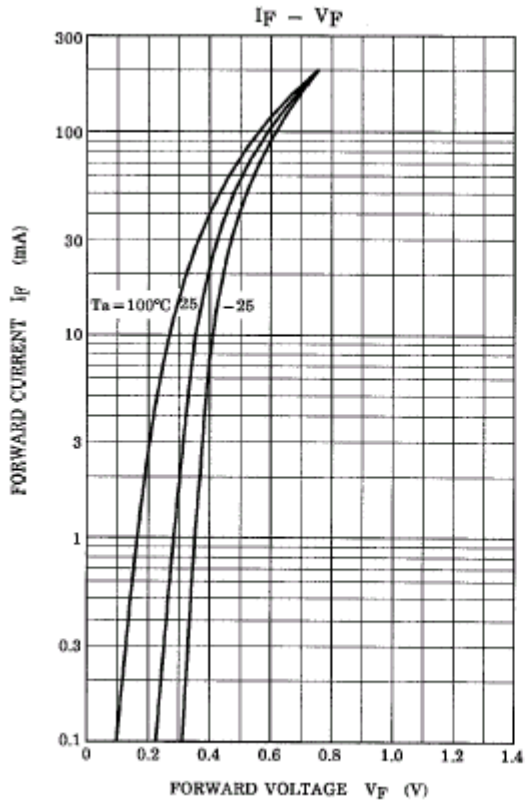
| Parameter | Test Conditions | Symbol | Min | Typ | Max | Unit |
|-------------------|-----------------|--------|-----|------|------|---------|
| Forward Voltage | $I_F = 1mA$ | V_F | - | 0.28 | - | V |
| | $I_F = 10mA$ | V_F | - | 0.36 | - | V |
| | $I_F = 50mA$ | V_F | - | 0.54 | 0.60 | V |
| Reverse Current | $V_R = 10V$ | I_R | - | - | 5 | μA |
| Total Capacitance | $f = 1MHz$ | C_T | - | 18 | 25 | pF |



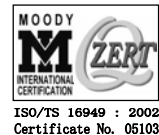
®

РАДИОТЕХ

Тел.: (495) 795-0805
Факс: (495) 234-1603
Эл. почта: info@rct.ru
Веб: www.rct.ru



SEMTECH ELECTRONICS LTD.
 (Subsidiary of Semtech International Holdings Limited, a company listed on the Hong Kong Stock Exchange, Stock Code: 724)



ISO/TS 16949 : 2002
 Certificate No. 05103



ISO 14001
 Certificate No. 7116



ISO 9001 : 2000
 Certificate No. 552-200-0436-04

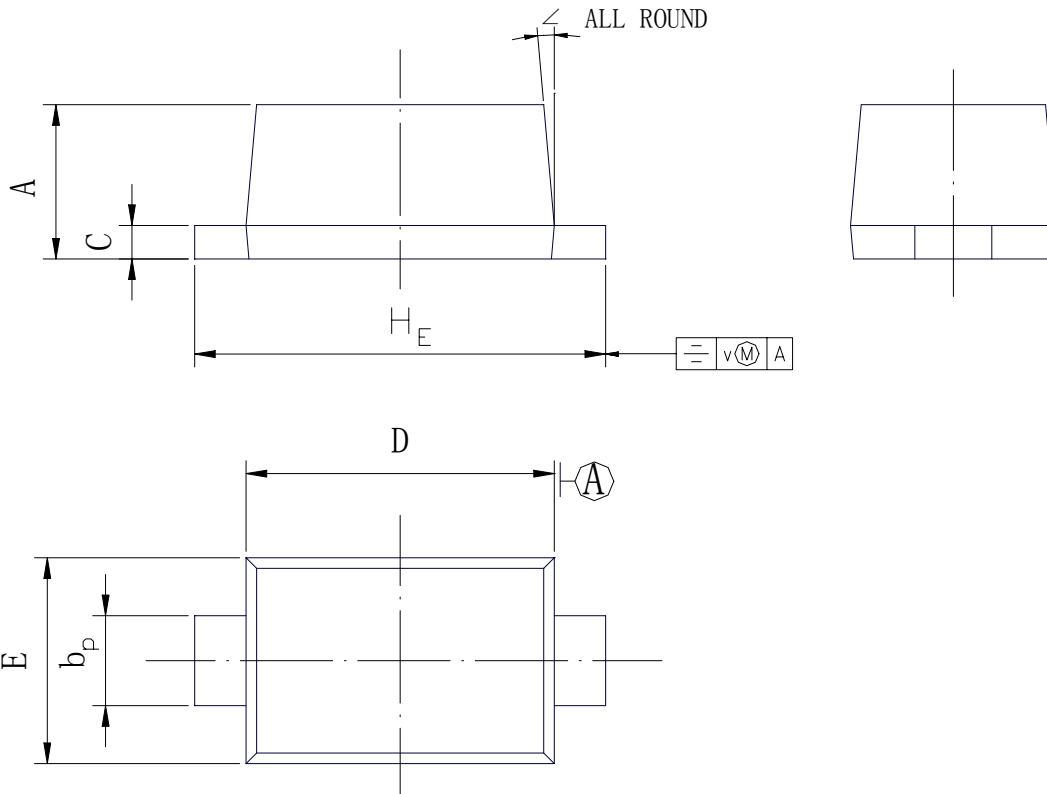
Dated : 30/10/2004

1SS388

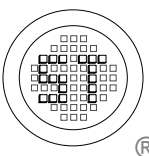
PACKAGE OUTLINE

Plastic surface mounted package; 2 leads

SOD-523



| UNIT | A | b_p | C | D | E | H_E | v | \angle |
|------|--------------|------------|----------------|--------------|--------------|--------------|-----|----------|
| mm | 0.70 0.60 | 0.4 0.3 | 0.135 0.127 | 1.25 1.15 | 0.85 0.75 | 1.65 1.55 | 0.1 | 5° |



SEMTECH ELECTRONICS LTD.

(Subsidiary of Semtech International Holdings Limited, a company listed on the Hong Kong Stock Exchange, Stock Code: 724)



ISO/TS 16949 : 2002
Certificate No. 05103



ISO 14001
Certificate No. 7116



ISO 9001 : 2000
Certificate No. 558-2004-0434

Dated : 30/10/2004