

# 1SS369

## SILICON EPITAXIAL SCHOTTKY BARRIER DIODE

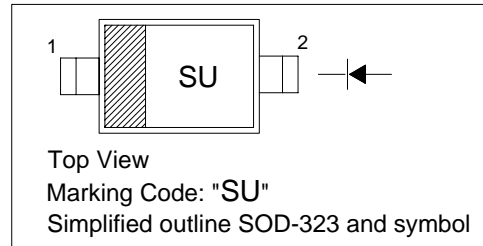
### High Speed Switching Application

#### Features

- Low forward voltage:  
 $V_{F(3)} = 0.54V$  (typ.)
- Low reverse voltage:  
 $I_R = 5\mu A$  (MAX.)

#### PINNING

PIN	DESCRIPTION
1	Cathode
2	Anode

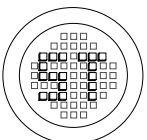


#### Absolute Maximum Ratings ( $T_j = 25^\circ C$ )

Parameter	Symbol	Value	Unit
Maximum (peak) Reverse Voltage	$V_{RM}$	45	V
Reverse Voltage	$V_R$	40	V
Maximum (peak) Forward Current	$I_{FM}$	300	mA
Average Forward Current	$I_O$	100	mA
Surge Current (10ms)	$I_{FSM}$	1	A
Power Dissipation	$P_{tot}$	150	mW
Junction Temperature	$T_J$	125	?
Storage Temperature Range	$T_s$	-55 to +125	?
Operating Temperature Range	$T_{opr}$	-40 to +100	?

#### Characteristics at $T_j = 25^\circ C$ ?

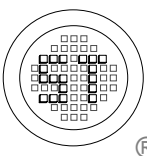
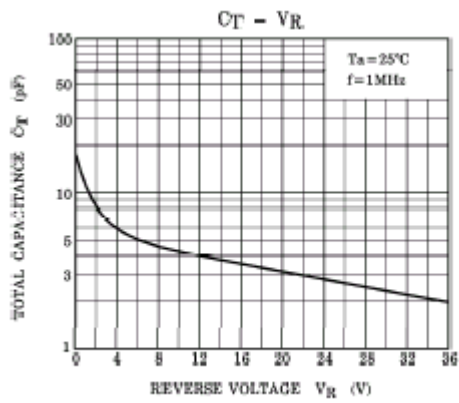
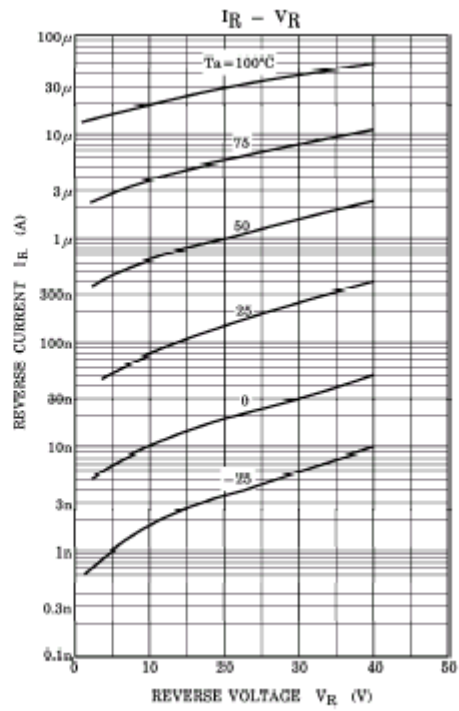
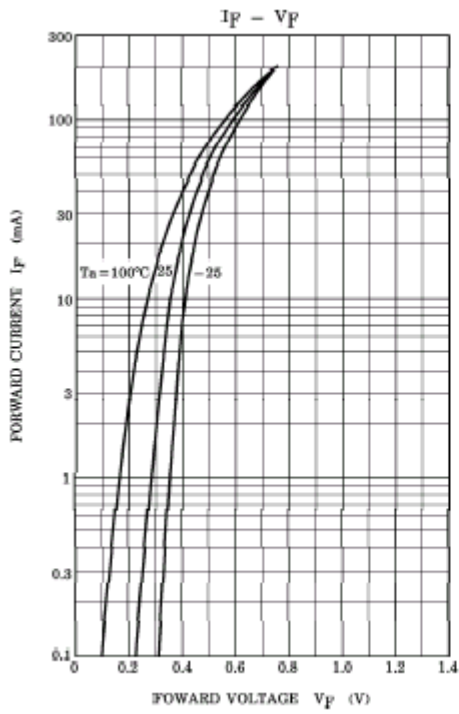
Parameter	Test Conditions	Symbol	Min	Typ	Max	Unit
Forward Voltage	$I_F = 1mA$	$V_F$	-	0.28	-	V
	$I_F = 10mA$	$V_F$	-	0.36	-	V
	$I_F = 100mA$	$V_F$	-	0.54	0.60	V
Reverse Current	$V_R = 40V$	$I_R$	-	-	5	$\mu A$
Total Capacitance	$f = 1MHz$	$C_T$	-	18	25	pF



®

**РАДИОТЕХ**

Тел.: (495) 795-0805  
Факс: (495) 234-1603  
Эл. почта: info@rct.ru  
Веб: www.rct.ru



## SEMTECH ELECTRONICS LTD.

(Subsidiary of Semtech International Holdings Limited, a company listed on the Hong Kong Stock Exchange, Stock Code: 724)



ISO/TS 16949 : 2002  
Certificate No. 05103



ISO 14001  
Certificate No. 7116



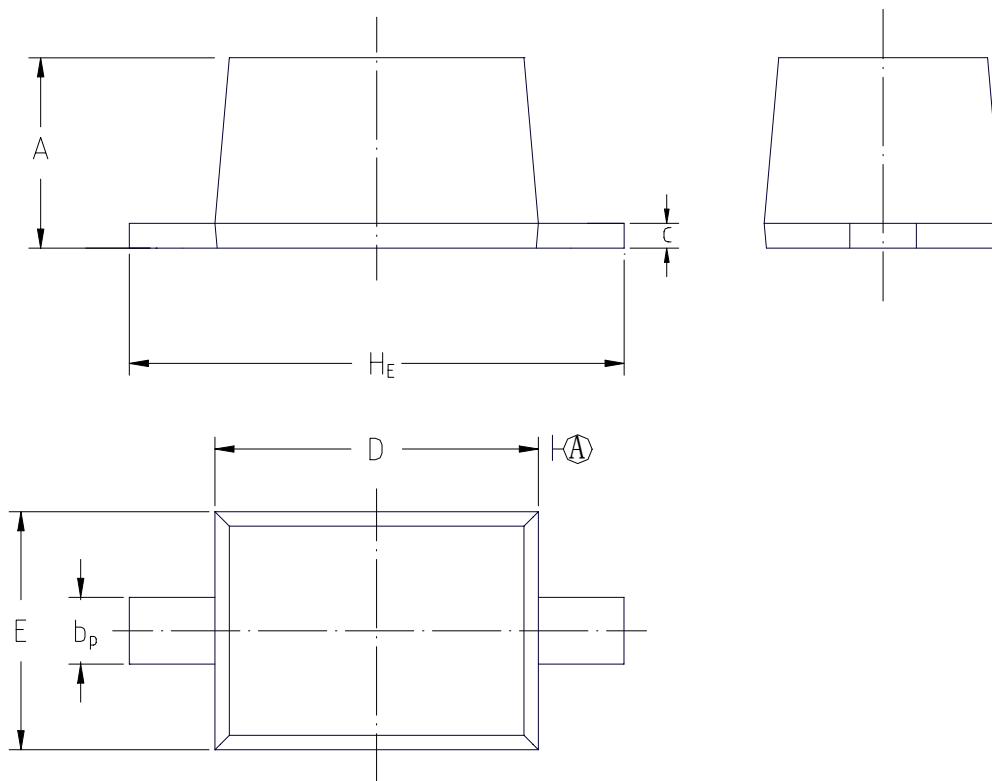
ISO 9001 : 2000  
Certificate No. 0301004002

Dated : 30/10/2004

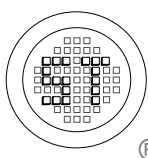
## PACKAGE OUTLINE

Plastic surface mounted package; 2 leads

SOD-323

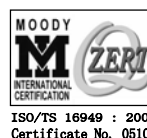


UNIT	A	$b_p$	c	D	E	$H_E$
mm	1.10 0.80	0.40 0.25	0.15 0.00	1.80 1.60	1.35 1.15	2.80 2.30



## SEMTECH ELECTRONICS LTD.

(Subsidiary of Semtech International Holdings Limited, a company listed on the Hong Kong Stock Exchange, Stock Code: 724)



ISO/TS 16949 : 2002  
Certificate No. 05103



ISO 14001  
Certificate No. 7116



ISO 9001 : 2000  
Certificate No. 827-100-0102-001

Dated : 30/10/2004