

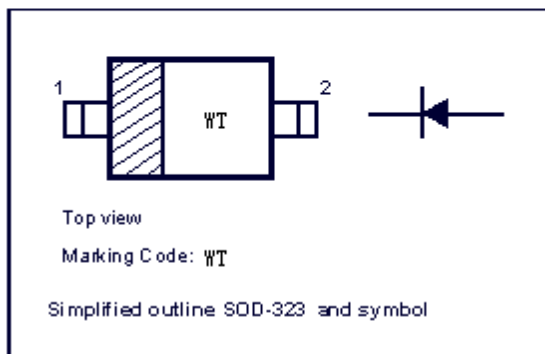
1N4448WS

SILICON EPITAXIAL PLANAR DIODE

Fast switching diode

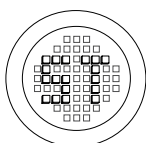
PINNING

PIN	DESCRIPTION
1	Cathode
2	Anode



Absolute Maximum Ratings ($T_a = 25^{\circ}\text{C}$)

	Symbol	Value	Unit
Reverse Voltage	V_R	75	V
Peak Reverse Voltage	V_{RM}	100	V
Rectified Current (Average) Half Wave Rectification with Resist. Load at $T_{amb} = 25^{\circ}\text{C}$ and $f/50 \text{ Hz}$	I_O	150	mA
Surge Forward Current at $t < 1\text{s}$ and $T_j = 25^{\circ}\text{C}$	I_{FSM}	500	mA
Power Dissipation	P_{tot}	500	mW
Junction Temperature	T_j	200	$^{\circ}\text{C}$
Storage Temperature Range	T_s	-65 to +200	$^{\circ}\text{C}$



®

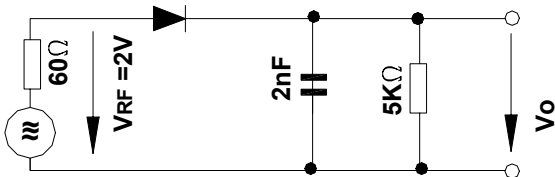
РАДИОТЕХ

Тел.: (495) 795-0805
Факс: (495) 234-1603
Эл. почта: info@rct.ru
Веб: www.rct.ru

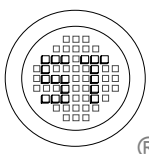
1N4448WS

Characteristics at $T_j = 25^\circ\text{C}$

	Symbol	Min.	Typ.	Max.	Unit
Forward Voltage at $I_F = 5\text{mA}$	V_F	0.62	-	0.72	V
at $I_F = 100\text{mA}$	V_F	-	-	1	V
Leakage Current at $V_R = 20\text{V}$	I_R	-	-	25	nA
at $V_R = 75\text{V}$	I_R	-	-	5	μA
at $V_R = 20\text{V}, T_j = 150^\circ\text{C}$	I_R	-	-	50	μA
Reverse Breakdown Voltage tested with $100\mu\text{A}$ Pulses	$V_{(BR)R}$	100	-	-	V
Capacitance at $V_F = V_R = 0$	C_{tot}	-	-	4	pF
Reverse Recovery Time from $I_F = 10\text{mA}$ to $I_R = 1\text{mA}$, $V_R = 6\text{V}$, $R_L = 100\Omega$	t_{rr}	-	-	4	ns
Thermal Resistance Junction to Ambient Air	R_{thA}	-	-	0.35	K/mW
Rectification Efficiency at $f = 100\text{MHz}$, $V_{RF} = 2\text{V}$	η_v	0.45	-	-	-



Rectification Efficiency Measurement Circuit



SEMTECH ELECTRONICS LTD.

(Subsidiary of Semtech International Holdings Limited, a company listed on the Hong Kong Stock Exchange, Stock Code: 724)



ISO/TS 16949 : 2002
Certificate No. 05103



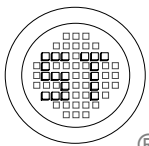
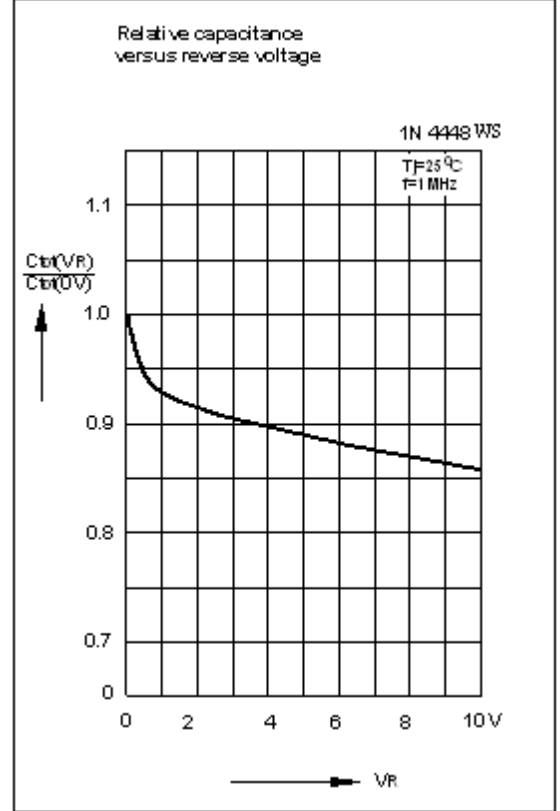
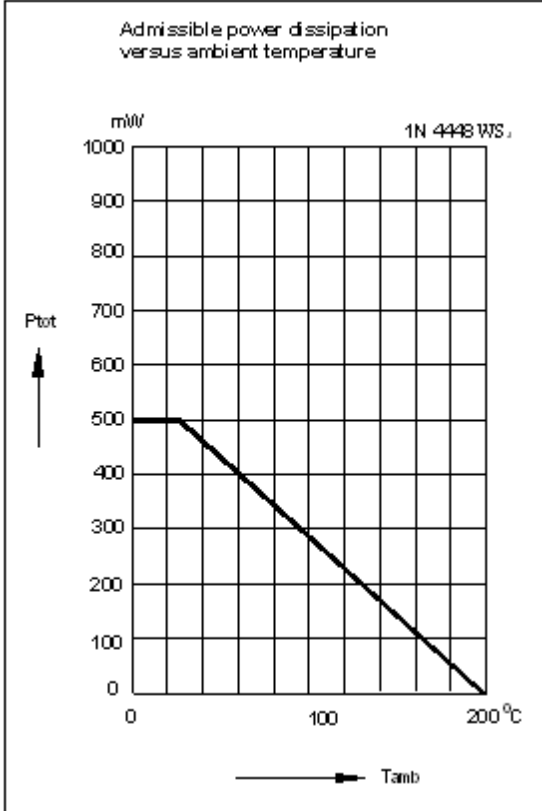
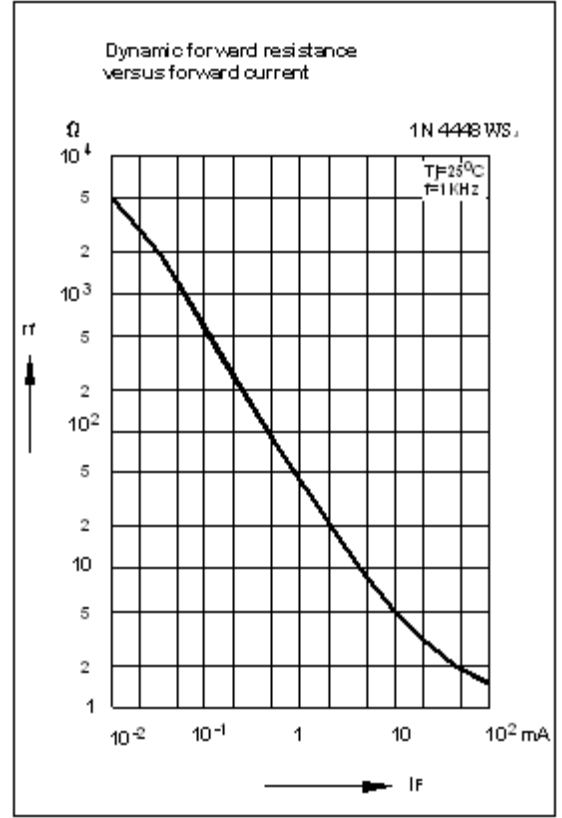
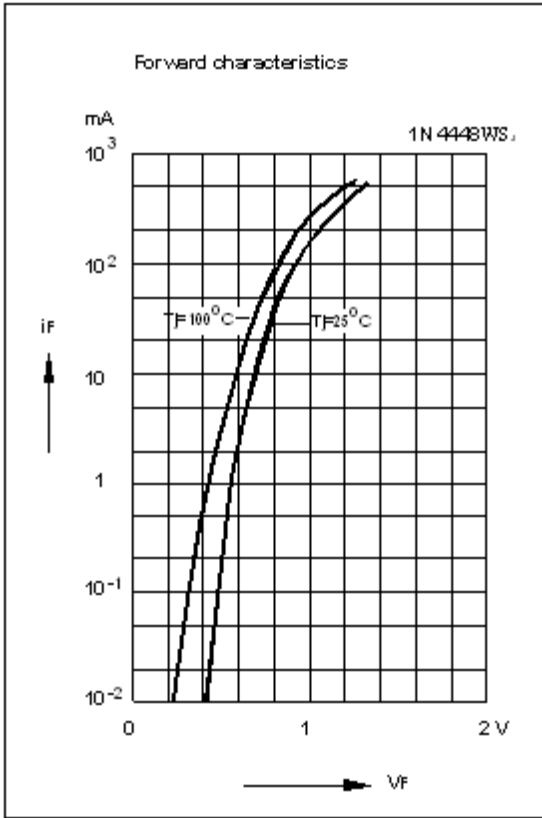
ISO 14001
Certificate No. 7116



ISO 9001 : 2000
Certificate No. 550-159-04-002-04

Dated : 02/03/2005

1N4448WS



SEMTECH ELECTRONICS LTD.

(Subsidiary of Semtech International Holdings Limited, a company listed on the Hong Kong Stock Exchange, Stock Code: 724)



ISO/TS 16949 : 2002
Certificate No. 05103



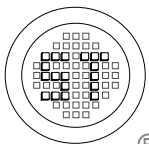
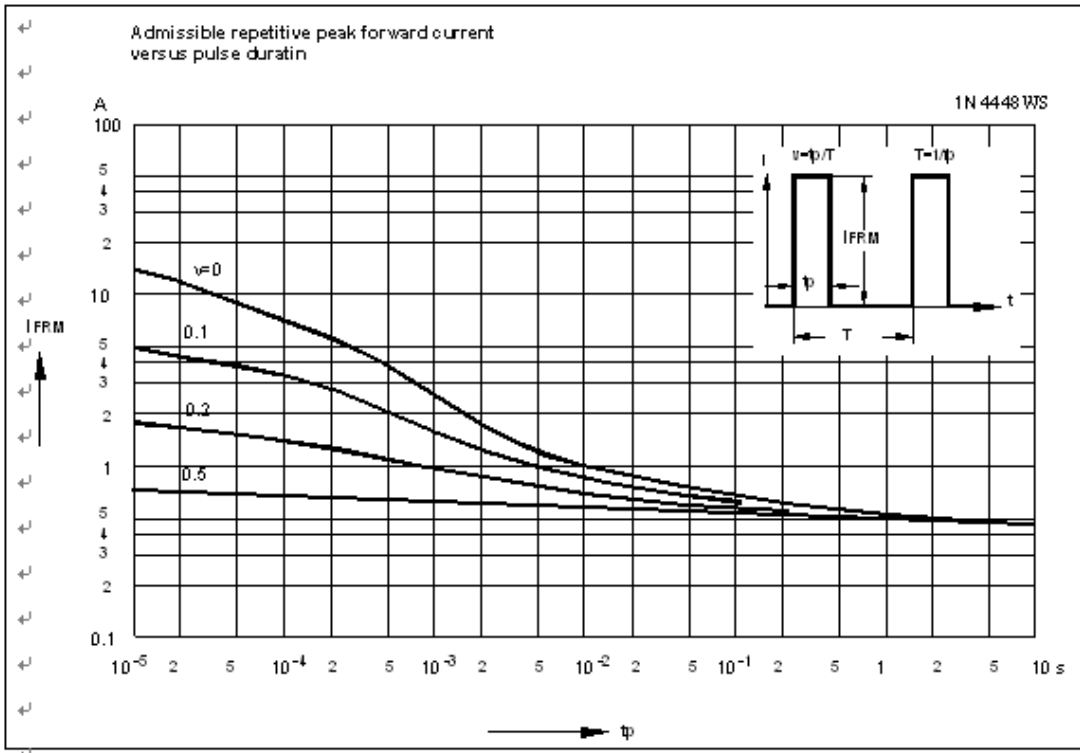
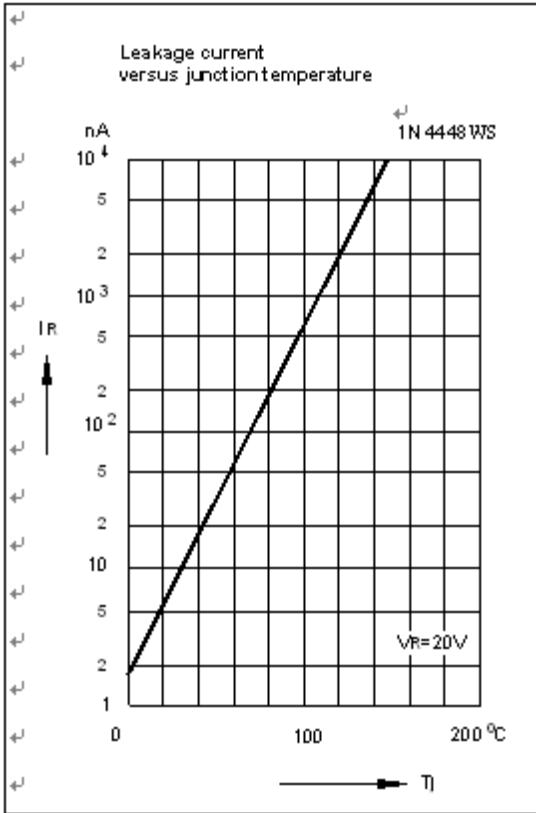
ISO 14001
Certificate No. 7116



ISO 9001 : 2000
Certificate No. 550-150-04-00-04

Dated : 02/03/2005

1N4448WS



SEMTECH ELECTRONICS LTD.

(Subsidiary of Semtech International Holdings Limited, a company listed on the Hong Kong Stock Exchange, Stock Code: 724)



ISO/TS 16949 : 2002
Certificate No. 05103



ISO 14001
Certificate No. 7116



ISO 9001 : 2000
Certificate No. 050-1559-04-002-04

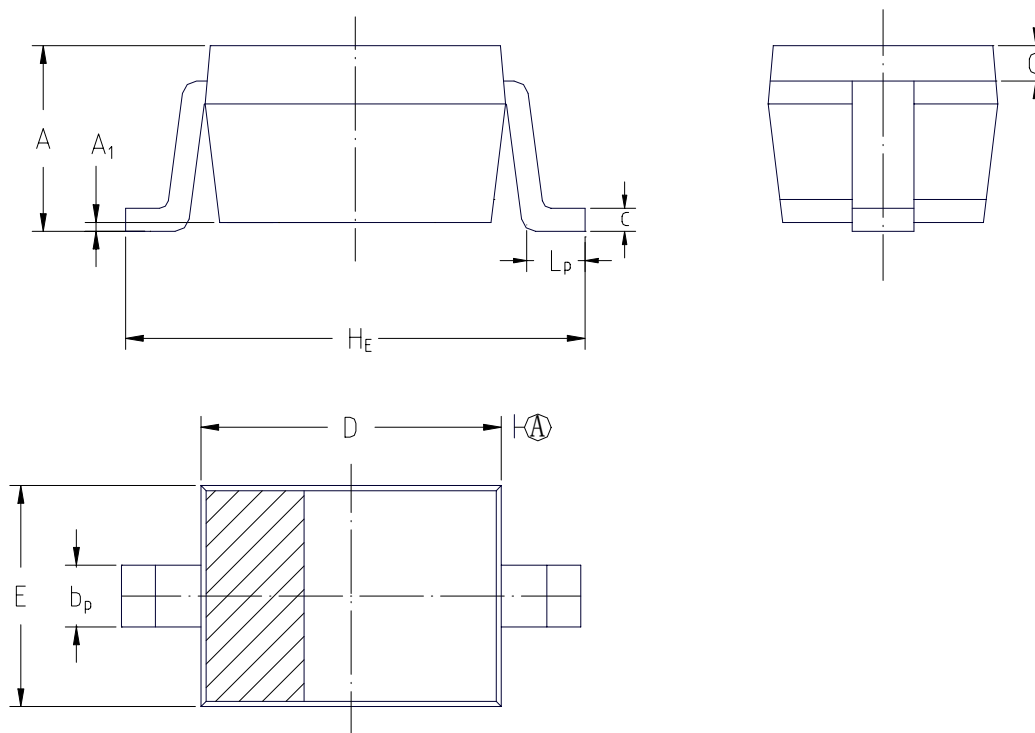
Dated : 02/03/2005

1N4448WS

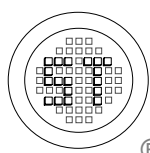
PACKAGE OUTLINE

Plastic surface mounted package; 2 leads

SOD-323



UNIT	A	A ₁	b _p	c	D	E	H _E	L _p	Q
mm	1.10 0.80	0.1 0	0.40 0.25	0.15 0.00	1.80 1.60	1.35 1.15	2.80 2.30	0.50 0.10	0.15 REF.



SEMTECH ELECTRONICS LTD.

(Subsidiary of Semtech International Holdings Limited, a company listed on the Hong Kong Stock Exchange, Stock Code: 724)



ISO/TS 16949 : 2002
Certificate No. 05103



ISO 14001
Certificate No. 7116



ISO 9001 : 2000
Certificate No. 550-159-04-002-04

Dated : 02/03/2005