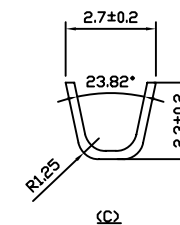
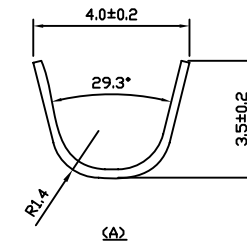
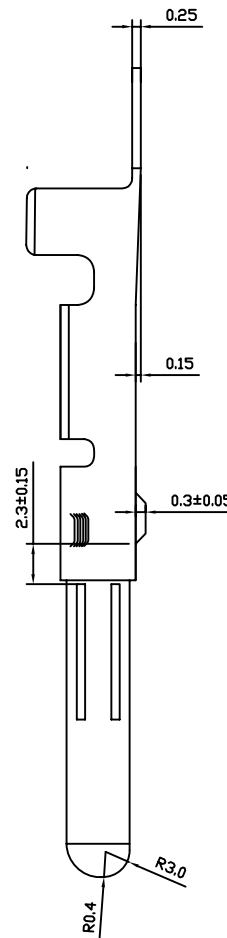
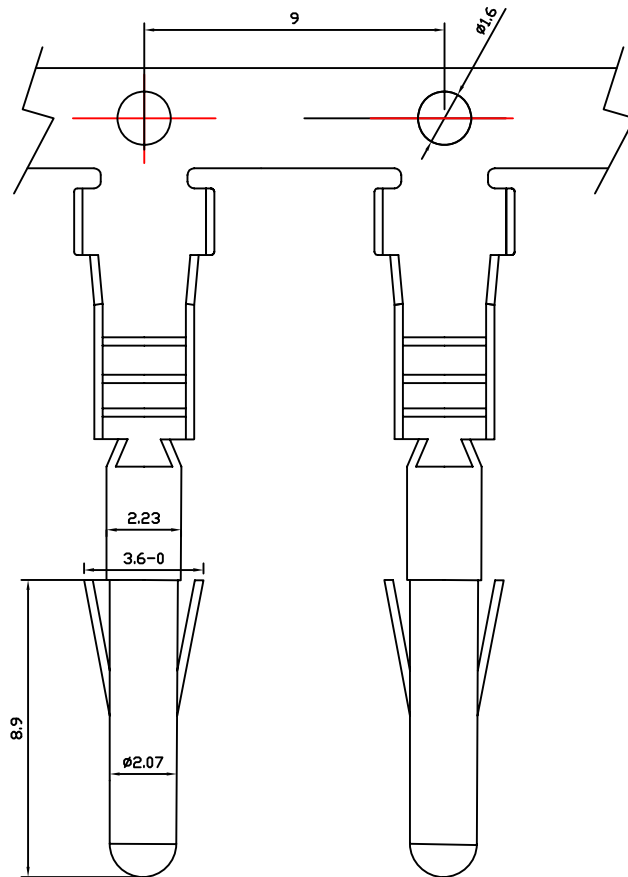


Rev	Revisions	Rev.Drawn	Date
A			25.05.09

SPECIFICATIONS

TERMINAL

- Part No. : SPS2-MT
- Material : Brass
- Finish : Tin-plated
- Applicable wires: AWG #18~24 2.50mm max
- Q' ty : 7000pcs./Reel



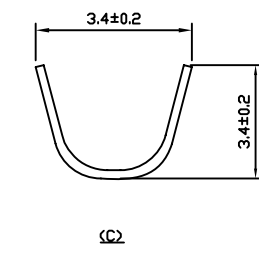
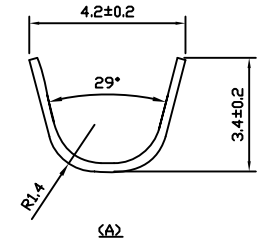
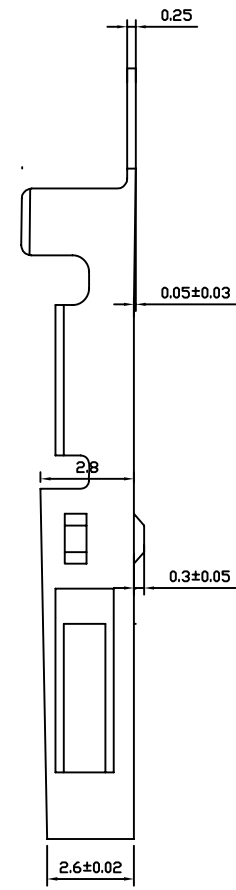
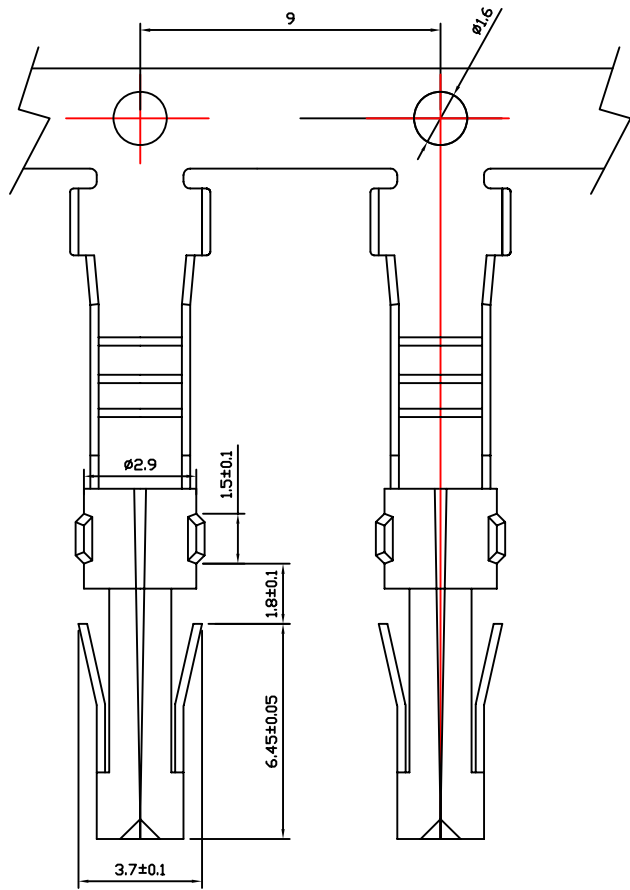
SGS Report No.:	Customer:	Part No.:	SPS2-MT		
Title: SPS2-MT Terminal					
Drawn By: Storm.Li	SCALE	SHEET	REV.	DWG NO.:	TOLERANCE:
Checked By: Simmon	/	1/1	A	SST-20090525-03	ANGLES ±
Approved By: Tony	Thire angle Projection		General Dimesion Tolerance		Units mm

Rev	Revisions	Rev.Drawn	Date
A			25.05.09

SPECIFICATIONS

TERMINAL

- Part No. : SPS2-FT
- Material : Brass
- Finish : Tin-plated
- Applicable wires: AWG #18~24 2.50mm max
- Q' ty : 7000pcs./Reel



SGS Report No.:	Customer:	Part No.:	SPS2-FT		
Title: SPS2-FT Terminal					
Drawn By: Storm.Li	SCALE	SHEET	REV.	DWG NO.:	TOLERANCE:
Checked By: Simmon	/	1/1	A	SST-20090525-02	
Approved By: Tony	Thire angle Projection		General Dimesion Tolerance		Units mm
					ANGLES \pm