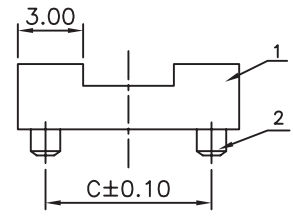
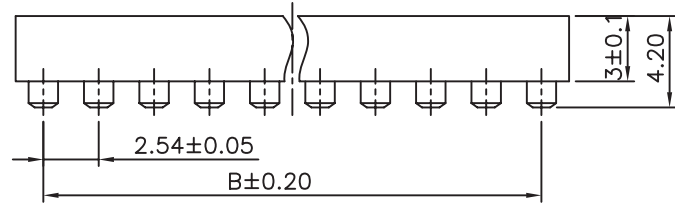
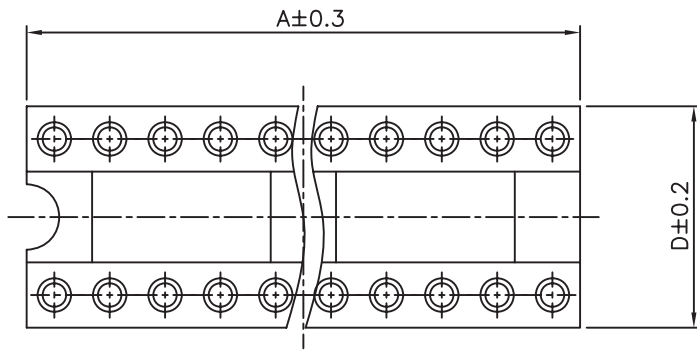


REV.	DESCRIPTION	DRAWN	CHECKED	APPROVED
A	NEW RELEASE	LJH 07/11/05'		



- NOTES:
- ELECTRICAL CHARACTERISTICS:
    - CONTACT RESISTANCE: 20mΩ Max.
    - DIELECTRIC WITHSTANDING VOLTAGE: 500V AC(rms) FOR 1 MINUTE.
    - INSULATION RESISTANCE: 1000MΩ Min.
  - ENVIRONMENT CHARACTERISTICS:
    - OPERATING TEMPERATURE: 0°C~+85°C.
    - STORAGE TEMPERATURE: -20°C~+70°C.
  - PRODUCT NUMBER CODE:

SCSP-xxSMT  
 SCLP-xxSMT

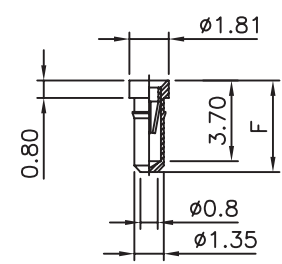
Mounting type  
 SMT

No. of contacts

Width  
 S: D=7.62  
 L: D=15.24

Position	Dimension			
	A	B	C	D
06	7.62	5.08	7.62	10.16
08	10.16	7.62	7.62	10.16
14	17.78	15.24	7.62	10.16
16	20.32	17.78	7.62	10.16
18	22.86	20.32	7.62	10.16
20	25.40	22.86	7.62	10.16
24	30.48	27.94	7.62	10.16
28	35.56	33.02	7.62	10.16
24	30.48	27.94	15.24	17.78
28	35.56	33.02	15.24	17.78
32	40.64	38.10	15.24	17.78
40	51.00	48.26	15.24	17.78

FIGURE A



GENERAL TOLERANCE	ANGLE TOLERANCE	PROJECTION		TITLE	SMT IC SOCKET PITCH 2.54mm
.X ±0.60	.X ±5°	UNITS	mm		
.X ±0.38	.X ±3°	SHEET SIZE	A4	SERIES	
.XX ±0.25	.XX ±2°				

2	CONTACT		COPPER ALLOY	GOLD PLATED	DRAWING TYPE	CUSTOMER	
1	HOUSING		THERMOPLASTIC	UL 94 V-0	SCALE	1:1	SHEET 1 OF 1
ITEM	PART NAME	PART NO.	MATERILAS	FINISHED	DRAWING NO.	C-DS1002-04-XXXXX	