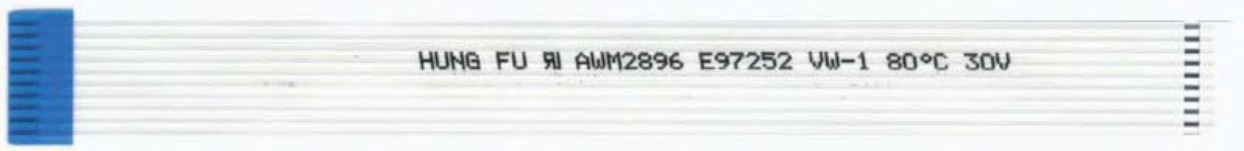


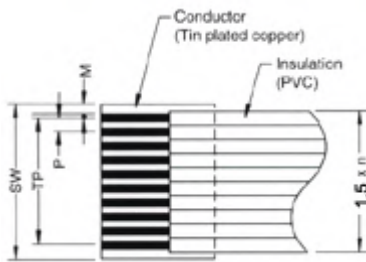
1.5 mm Pitch



Construction and size

UL STYLE NO. 2651
UL STYLE NO. 2896,20624,20706

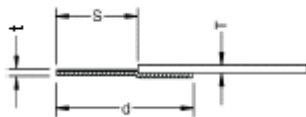
Construction



Item	Detail	
Conductor	Material	Tin Plated Copper
	Size	C8 0.1mm (thickness) x 0.5 mm (width)
Insulation	Material	(PVC)
	Color	White
Supporting Tape	Material	Polyester
	Color	Blue

Size

unit: mm



Item	Spec.	
Number of Conductors	: n	2~30 PIN
Pitch	: P	1.5
Total Pitch	: TP	1.5 x (n-1)
Supporting Tape Width	: SW	1.5 x (n+1)
Margin Width	: M	1.25
Thickness	: T	UL2651:0.57 UL2896:0.3
Strip Length	: S	3 - 4 - 5 - 6
Terminal Thickness	: t	0.32
Supporting Tape Length	: d	5 - 6 - 8 - 10

How to order

Insulation length

