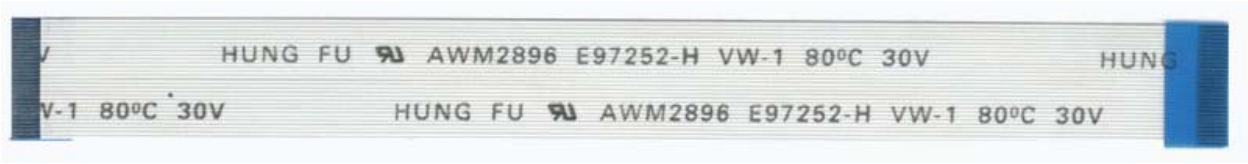


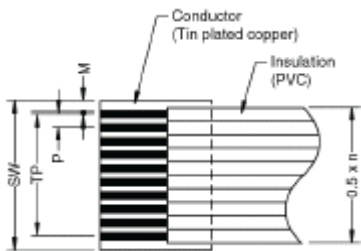
0.5 mm Pitch



Construction and size

UL STYLE NO. 2896,20624,20706

Construction

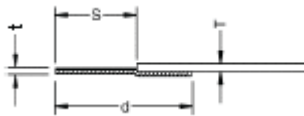


Item	Detail	
Conductor	Material	Tin Plated Copper
	Size	C5 0.05mm (thickness) x 0.3 mm (width)
Insulation	Material	(PVC)
	Color	White
Supporting Tape	Material	Polyester
	Color	Blue

Size

unit: mm

Item	Spec.
Number of Conductors	: n 6~60 PIN
Pitch	: P 0.5
Total Pitch	: TP 0.5 x (n-1)
Supporting Tape Width	: SW 0.5 x (n+1)
Margin Width	: M 0.35
Thickness	: T 0.3
Strip Length	: S 3 - 4 - 5 - 6
Terminal Thickness	: t 0.30
Supporting Tape Length	: d 5 - 6 - 8 - 10



How to order

Insulation length

