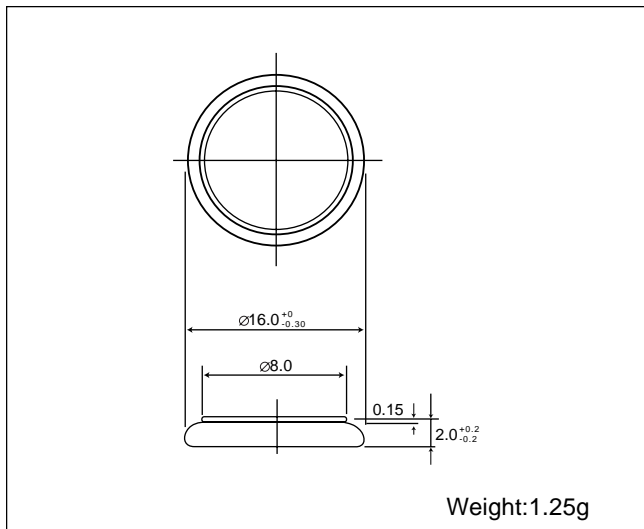


Manganese Titanium Lithium Rechargeable Batteries (MT series): Individual Specifications

MT1620

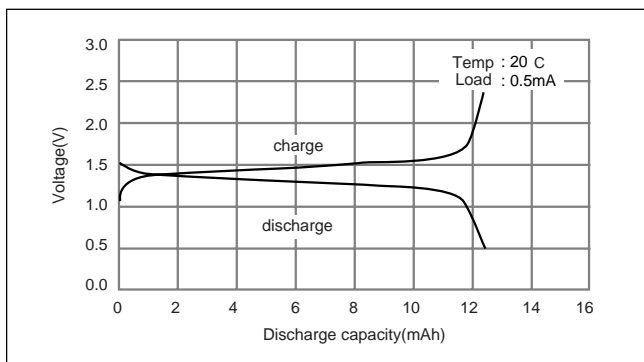
Dimensions(mm)



Specification

Nominal voltage (V)	1.5
Nominal capacity (mAh)	11.0
Continuous standard load (mA)	0.50
Operating temperature (C)	-20 ~ +60

Charge / discharge characteristics



Consumption current vs. Duration time

